



PALMY[®]
VENUES

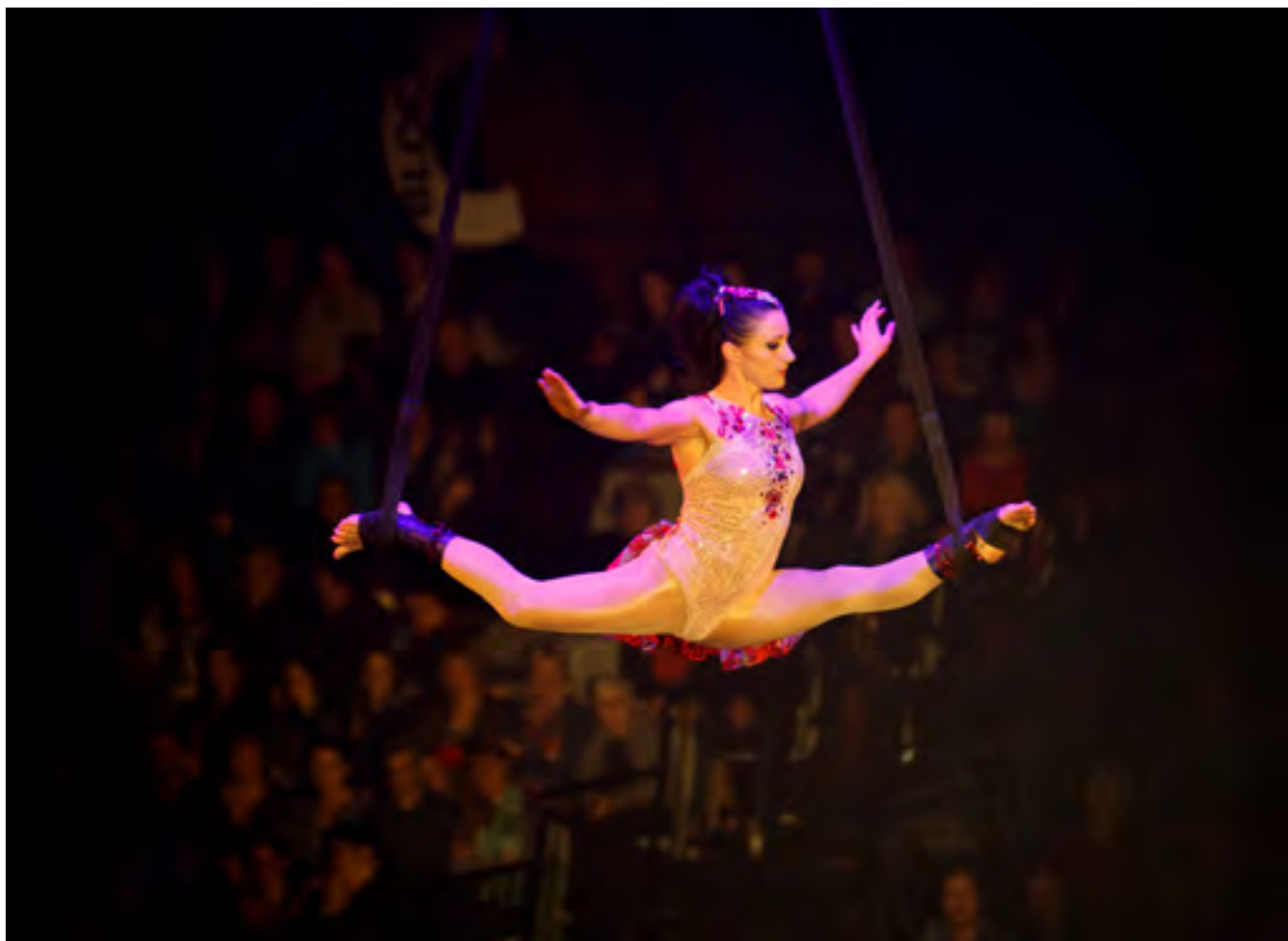
CENTRAL ENERGY TRUST ARENA

PUKA MŌHIOHIO
INFORMATION BOOKLET



TE RĀRANGI UPOKO CONTENTS

Welcome	5
Location	6
Palmy Map	8
Sporting Events + Tournaments	12
Conferences + Seminars	12
Exhibitions + Trade Shows	15
Gala Dinners + Cocktail Functions	16
Weddings	19
Concerts	20
Venue Map	21
Arena 1	25
Fly Palmy Arena (Arena 2)	26
Fly Palmy Arena Corporate Lounges	29
Arena 3	30
B&M Centre (Arena 4)	33
Arena 5	34
Arena 6	37
Catering	38
Accommodation	40
Things to do in Palmy	41



NAU MAI RĀ WELCOME

Central Energy Trust Arena is a leading multi-use sports and events facility that takes close to 3,000 bookings a year.

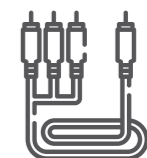
The Arena is home to 36 sporting codes and hosts a wide range of trade shows, exhibitions, sporting fixtures, dinners, conferences, meetings, seminars, festivals, concerts and leisure events year-round. The 18-hectare site is just seven minutes' walk from Palmy's city centre.

Central Energy Trust Arena has six venues, four indoor venues and two outdoor venues.

WHY WE'RE THE PERFECT VENUE



**DEDICATED EVENT
COORDINATOR**



**ONSITE
TECHNICIAN**



**MULTIPLE
VENUES UNDER
ONE ROOF**



CBD LOCATION



OPERATIONS STAFF



**ONSITE
CATERING**



**WALKING
DISTANCE TO
ACCOMMODATION**



**FREE
CAR PARKING**

TE TAKIWĀ O PAPAIOEA LOCATION

Palmerston North (or as we like to call it, Palmy) is the geographical centre of Aotearoa, 140km (87 miles) north of Wellington. It is part of New Zealand's second-largest population hub, with over one million people located within a two hour (200km) radius.

With a population of just under 90,000 people, Palmy is large enough to provide big-city facilities without the traffic congestion, access difficulties and cost associated with the larger centres. On arrival, this bonus is quickly apparent, with a 10-minute trip from the airport to your hotel check-in.

Palmerston North Airport has domestic services to all of the major cities as well as numerous provincial


centres. It also had the record for being open the most days of any New Zealand airport. Palmerston North's central location is also well serviced by road and rail.

Everything is accessible at Central Energy Trust Arena. Conveniently located just seven minutes' walk from the city centre, the Arena offers the very best proximity to a range of superb hotels and motels and is surrounded by vibrant bars, cafés, restaurants, museums and retail shops. As an added advantage we offer free car parking for all event attendees.


Palmy is the country's centre of food, science, education, innovation, and we have great rural connections. The Manawatū is also a hub for

the New Zealand Defence Force with Linton Military Camp, RNZAF Base Ohakea and we also offer excellent tertiary education with Massey University, UCOL and IPU. KiwiRail is progressing plans for a high-tech freight hub which will help grow Palmy's role as a critical freight distribution centre for the lower North Island. The freight hub highlights our city's nationally strategic location.










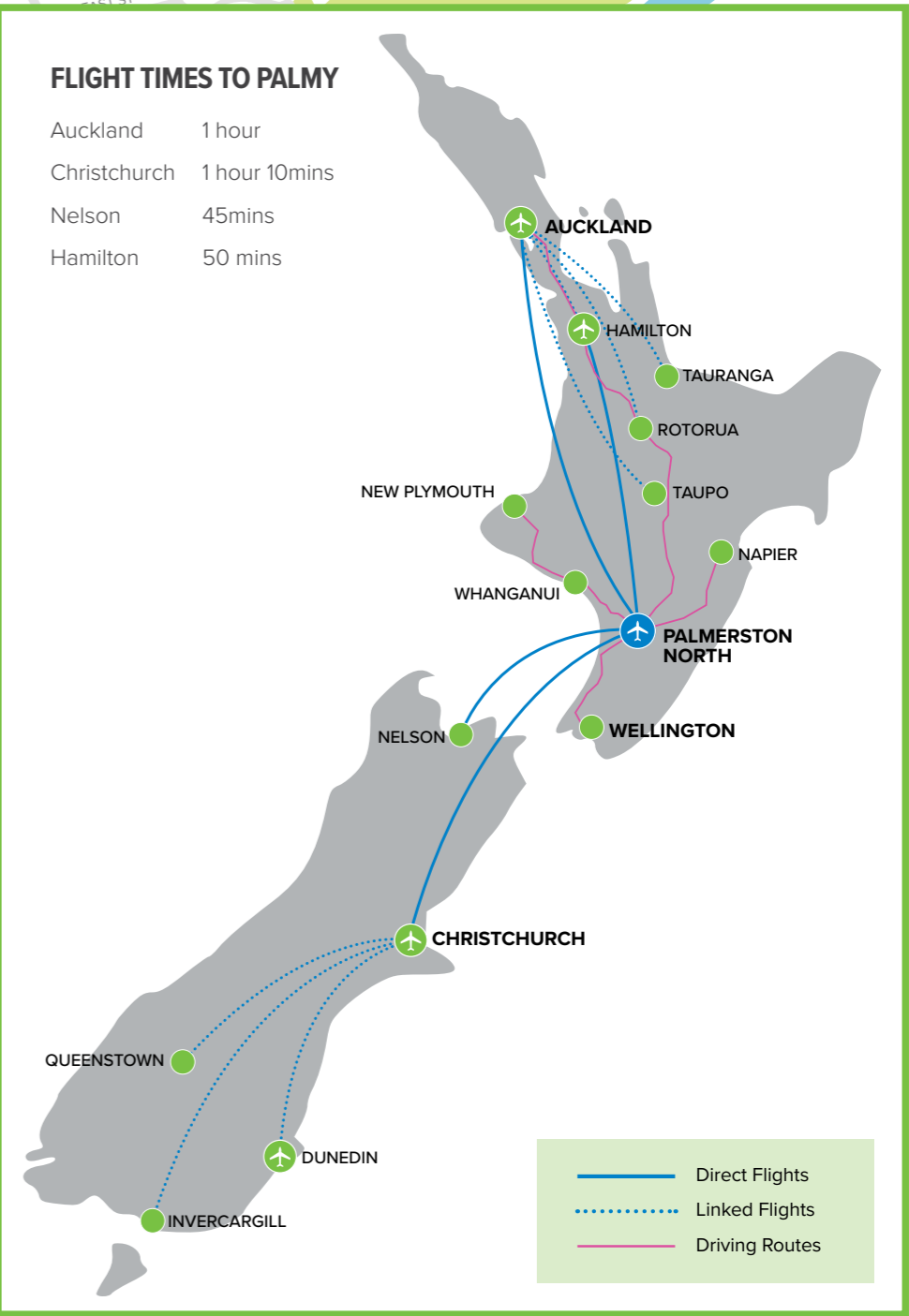


Central Energy Trust ARENA



PALMY CONFERENCE + FUNCTION CENTRE

-  Train Station
-  Bus Station
-  Airport
-  Copthorne Hotel
-  Distinction Coachman Hotel
-  Quest Hotel
-  Distinction Hotel Palmerston North (Cuba Street)





NGĀ TAIOPENGA HĀKINAKINA ME NGĀ TĀTĀWHĀINGA

SPORTING EVENTS + TOURNAMENTS

Central Energy Trust Arena is New Zealand's leading sporting and events precinct and is recognised as being the busiest multi-purpose complex in the country.

The Arena is home to 36 different sporting codes, from rugby to basketball, badminton, netball, football and roller-skating. Our venues are available to be hired for trainings, games, tournaments or community events, with the flexibility of six arenas on offer, which can be utilised individually or in conjunction with one another.

A key attraction for national and regional sporting tournaments is

the ability to house all teams under one roof for indoor codes, with the interconnecting Fly Palmy Arena, Arena 3 and B&M Centre. There are also plenty of rooms for tournament offices, referee lounges, physio rooms and managers' spaces.

The Arena 6 fields are home to many football, rugby and league tournaments, games and trainings. The Arena 6 fields can be used in conjunction with the main Arena 1 playing field, providing ample space for multi-day outdoor tournaments, or community events.

Our team at Central Energy Trust Arena are experienced in hosting

multi-day or week-long tournaments comprised of hundreds of teams from throughout Aotearoa. Our team can provide contact details for accommodation and transport providers for your event organisers and attendees, plus assist in organising an opening ceremony, closing ceremony, cocktail function or gala dinner.



NGĀ HUI TAUMATA ME NGĀ HUI WĀNANGA

CONFERENCES + SEMINARS

Central Energy Trust Arena is a venue of choice for events with a significant number of delegates. Our versatile venues can host up to 2,500 delegates for a conference and 1,500 for a gala dinner. The park-like environment boasts six Arenas, three of which are interconnecting indoor facilities.

The interconnecting Fly Palmy Arena, Arena 3 and B&M can be expanded, reduced or used in combinations to suit a conference or seminar of any size. The new retractable seating in Fly Palmy Arena is a popular choice for theatre-style seating, with corporate lounges providing plentiful space for up to six break-out rooms. The Fly Palmy Arena also

offers a permanently installed 13 x 14m mothergrid truss with side wings for ease of production elements. Food and beverage options can conveniently be set up in adjoining venues, providing ease of access under one roof, with no disruptions for speakers. Any of the venues can be themed and dressed to suit a gala dinner following a conference, with the most popular venues being Fly Palmy Arena or the Ballroom in Arena 4. Carpet, staging and draping options are available in all indoor venues.

The J.A. Russell Supplies Lounge, located on Level 4 of the Arena 1 grandstand provides the most impressive venue for smaller

conferences, seminars or meetings. The venue features striking 360-degree views from the Ruahine Ranges across to the central North Island mountains.

We offer the convenience of free delegate car parking, high-speed internet and room set up, all organised by your dedicated Venues + Events Coordinator.

Central Energy Trust Arena also boasts mouth-watering onsite catering, organised directly with our contract catering company, Absolute Caterers.





NGĀ WHAKAKITENGA ME NGĀ WHAKAATURANGA AHUMAHI

EXHIBITIONS + TRADE SHOWS

Our venues provide plentiful space and flexible options to suit any event. With 11,900m² of quality indoor floor space, Central Energy Trust Arena provides organisers with the luxury of huge space and big opportunity.

Central Energy Trust Arena offers a range of spaces that are used for exhibitions and trade shows, including Fly Palmy Arena, Arena 3, B&M Centre and Arena 5.

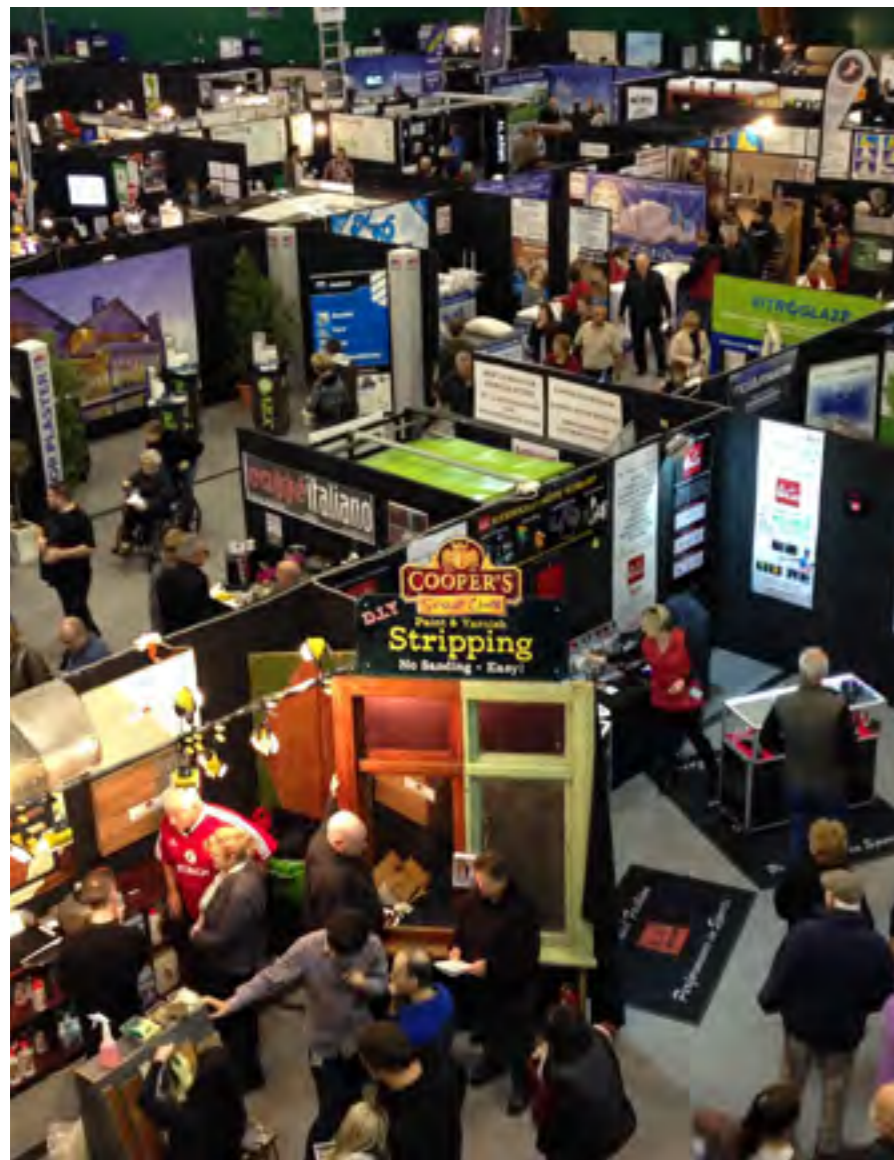
Fly Palmy Arena is a purpose-built indoor sport and event venue making it ideal for exhibitions and trade shows with 3,400m² of floor space. Alongside plentiful space for

trade booths, the venue also has break-out spaces, media rooms, organisers offices, an inbuilt ticket booth, and links directly into Arena 3. Arena 3 is a popular choice for medium-sized exhibitions or is often used in conjunction with the other indoor venues for large scale events. Arena 3 links directly into the B&M Centre which offers event organisers an additional 6,400m² of floor space under one roof.

Arena 5 provides flexible venue options for smaller exhibitions with 630m² of floor space in the Bell Hall and 1,050m² of floor space in Barber Hall.

With quality onsite catering, ample car parking, organiser offices, media rooms and hospitality suites, Central Energy Trust Arena is an all-in-one exhibition venue.

Our skilled operations team will work alongside you to achieve a successful set up and pack down, in conjunction with your dedicated Venues + Events Coordinator.



NGĀ HĀKARI NUI ME NGĀ HUINGA KAI WHAKAPĪTAITAI

GALA DINNERS + COCKTAIL FUNCTIONS

A gala dinner is a special occasion that should be celebrated in style. At Central Energy Trust Arena we have the expertise onsite to deliver a professional and polished dinner or cocktail function. By day our venues provide professional and purpose-built meeting rooms and sporting facilities, by night the same rooms can be transformed into a themed gala dinner, cocktail party or awards ceremony.

Fly Palmy Arena and the Ballroom are popular options for gala dinners, with the Fly Palmy Arena corporate lounges and the J.A. Russell Supplies Lounge being popular cocktail or function options.

Central Energy Trust Arena has an extensive portfolio of onsite furniture and equipment from draping to carpet and staging units. Our Fly Palmy Arena offers a permanently installed a 13 x 14m mothergrid truss with side wings for ease of

production elements. The team works alongside production event contractors to visually bring your event to life through advanced lighting, theming and projection options.

Central Energy Trust Arena has an exclusive catering supplier, Absolute Caterers, who provide mouth-watering cocktail and dinner catering options delivered with quality service. Extensive menu options will exceed your expectations.





NGĀ MĀRENA WEDDINGS

Planning your dream wedding has never been easier. Our all-inclusive wedding packages can turn your dream wedding into a reality.

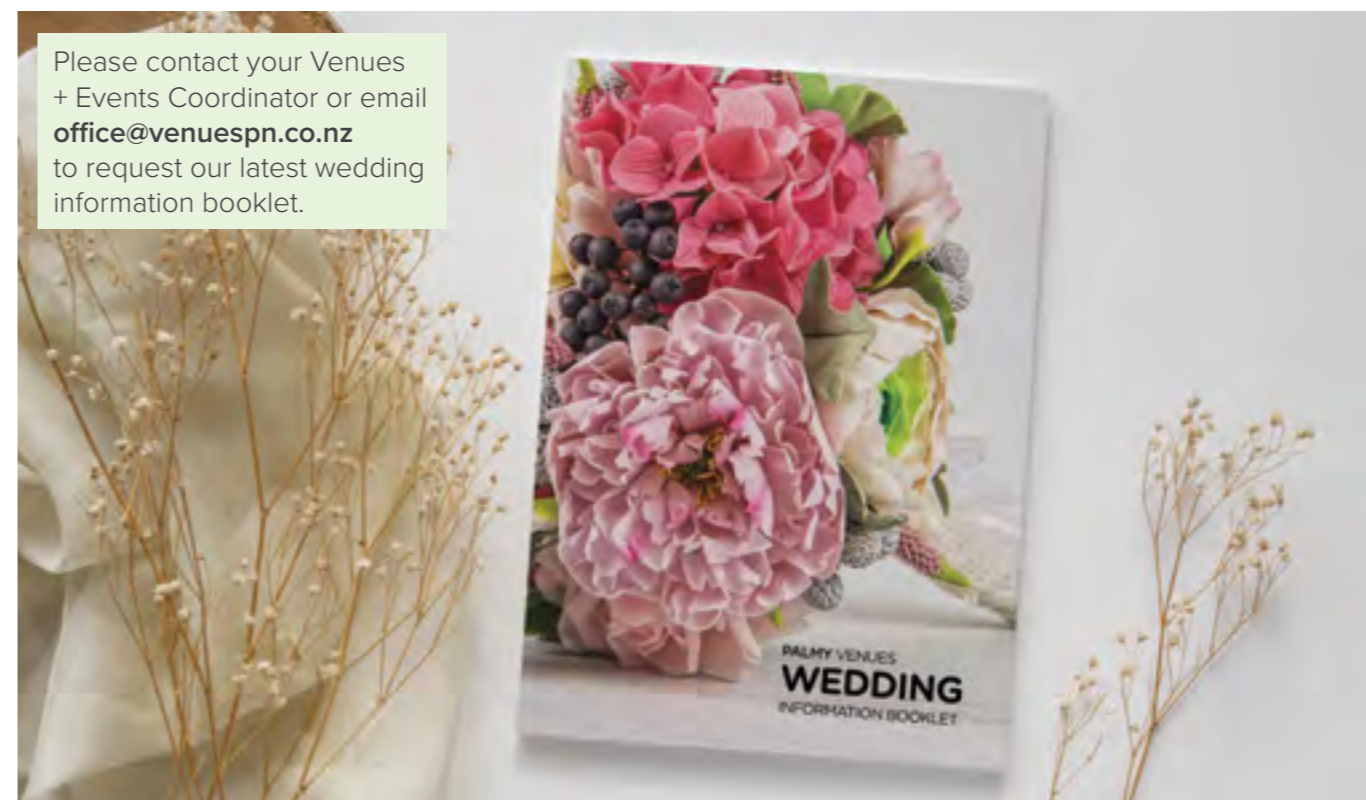
Whether you picture a grand formal wedding reception or a small intimate gathering, let our experienced Venues + Events Coordinator create a spectacular event just for you.

We have complete wedding packages designed to give you value for money without compromise. We pride ourselves on excellent service, food and ambience.

Central Energy Trust Arena provides a walk-in, walk-out service. Our team does all the setting up so you can have a worry-free wedding. At the end of the night, you can leave without the hassle of packing and cleaning up.

Absolute Caterers have many years of combined industry experience. They know the key to a fantastic wedding is not just the food but the service as well, so whether you've planned a small, intimate celebration or a large scale wedding, the team at Absolute Caterers provide wedding catering to make your day perfect.

Whatever your unique style, taste and budget, you need a wedding catering service that truly understands the experience you want to create. Absolute Caterers' commitment to unique food that utilises the freshest local ingredients, impeccable presentation, and friendly service will have your guests talking about your wedding for years to come.



Please contact your Venues + Events Coordinator or email office@venuespn.co.nz to request our latest wedding information booklet.

NGĀ KONOHETE CONCERTS

With multiple venue options at Central Energy Trust Arena, Palmy has found its place on the tour circuit with the flexibility of indoor and outdoor spaces and the ability to host a small gig or major concert.

Our venues have seen some epic acts over the years, including UB40, Katchafire, Six60, Devilskin, Kora, Blindspott and Sol3 Mio. Our geographical location makes us perfect to host concerts, with over one-million people located within a two hour (200km) radius of Central Energy Trust Arena.

Arena 1 sets the scene for an impressive outdoor summer concert. With an abundance of seating, entry gate and corporate hospitality options, Arena 1 can put on quite

the show. This venue provides promoters with huge space and big opportunity.

Fly Palmy Arena is a purpose-built indoor entertainment venue and a popular choice with concert promoters. This venue boasts new retractable seating units, staging modules, trussing, rigging points, corporate lounges and a ticketing office.

The B&M Centre is also a popular choice among promoters and is typically utilised for smaller indoor gigs. The B&M Centre can be adjusted in size, using draping to design the perfect setting and size for your gig, and provides a more relaxed, club-like setting.

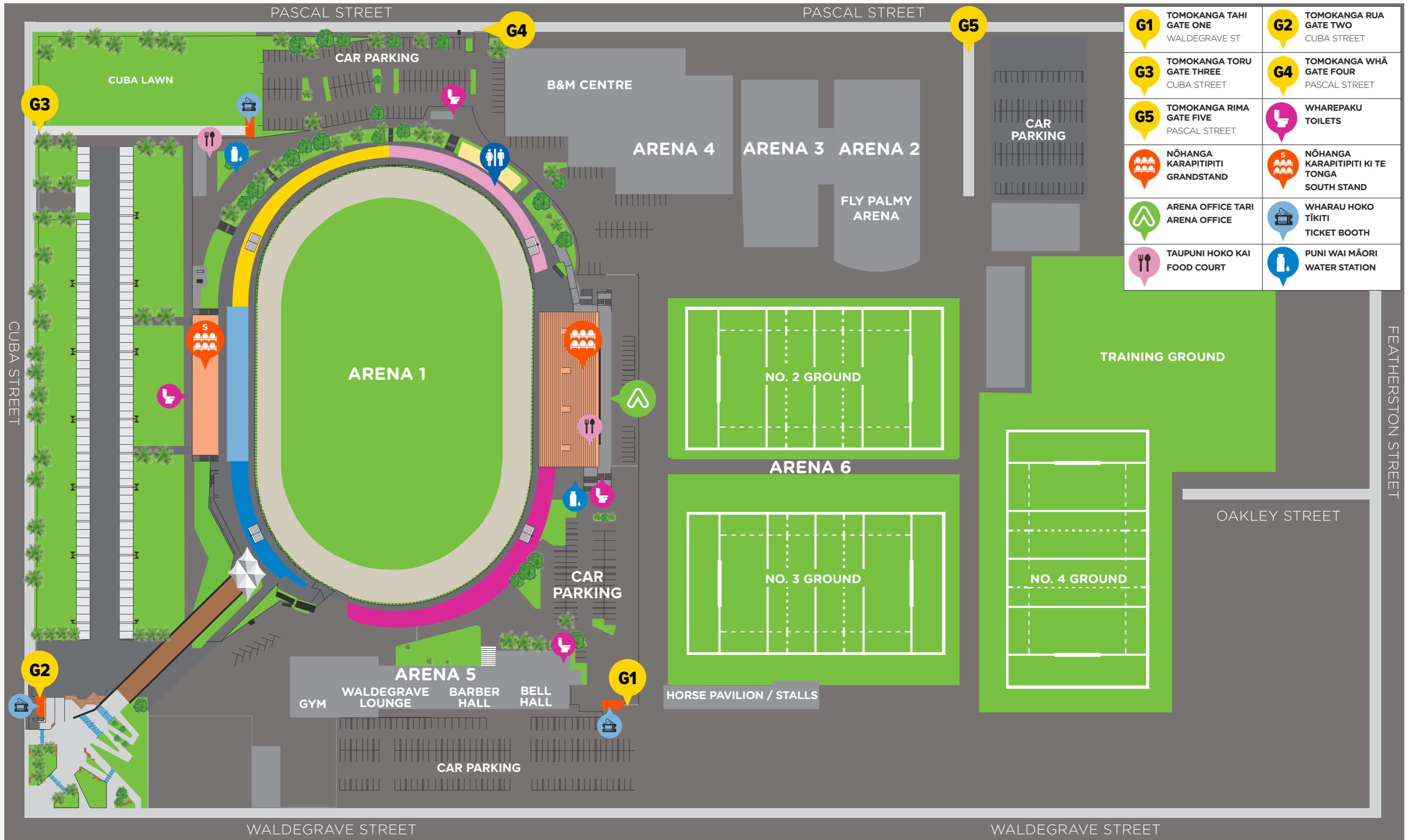
All our venues have ample room for security and bag check areas, plus the perimeter of Central Energy Trust Arena is secure.

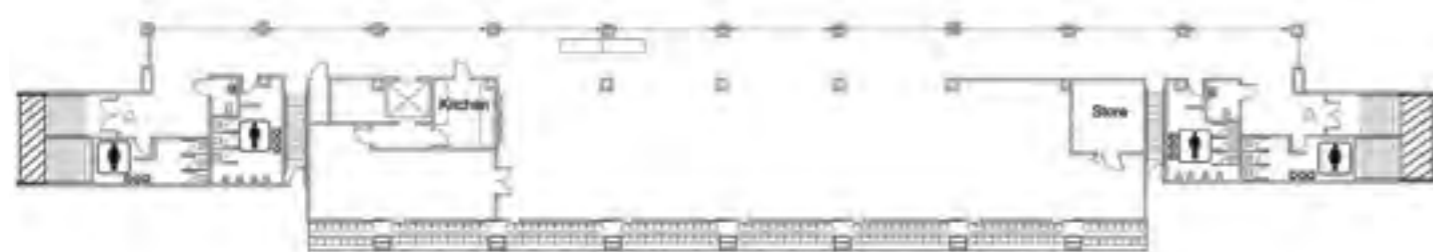
We have an onsite ticketing coordinator who can liaise directly with our preferred ticketing provider on your behalf in the lead up to tickets going on sale through to event delivery, managing all event day ticketing requirements such as equipment, staffing and set up.

Whatever the scale of your event, you'll find our venues can put on a stellar performance.



TE MAHERE O TE WHAITUA VENUE MAP





J.A. Russell Supplies Lounge Floorplan

ARENA 1

Arena 1 is the feature sports ground in the Central Districts of the North Island and is home to the Manawatu Rugby Union and Robertson Holden International Speedway.

Your attendees can view our world-class venue with redeveloped speedway pits, plaza entrance, pedestrian bridge, ablutions block, south stand and food court.

Arena 1 features a playing field and world-class speedway track. The grass oval measures 165m long and 95m wide. A large LED screen is onsite that is used for video replays, screening of DVDs and advertising as required. The screen measures 42m2. The JA Russell Supplies Lounge, Media Lounge and public food and beverage concourse level are situated in the Arena 1 Grandstand building.

Arena 1 has four access gates for patrons, which also feature ticket booths and appropriate areas for security checkpoints and ticket scanners. Like the rest of the venue, Arena 1 boasts extensive free onsite and street car parking.

J.A. RUSSELL SUPPLIES LOUNGE

The J.A. Russell Supplies Lounge is the premium viewpoint at Arena 1 and boasts 360-degree views of Palmerston North City on level 4 of the grandstand. The J.A. Russell Supplies Lounge hosts hundreds of events annually, which includes corporate functions, weddings, meetings, and cocktail functions.

This lounge can accommodate 300 people standing or 160 seated banquet style. Glass doors open outside onto 148 premium balcony seats.

FEATURES:

- Premium show field.
- Speedway track renowned for many of New Zealand's national and international speedway events.
- Seating capacity up to 18,000.
- Lighting level of 1500 lux.
- Extensive onsite and street parking.
- Media lounge with full facilities for television, radio and press representatives.
- Coaches boxes.
- Changing facilities / toilet facilities / first aid room.
- Anti-doping control station.
- Photographer and media room.
- JA Russell Supplies Lounge
- Designated food and beverage concourse
- World-class speedway pits
- Plaza entrance with pedestrian bridge

FLY PALMY ARENA

Fly Palmy Arena is a purpose-built indoor sports and entertainment venue. Distinctive laminated polished timber beams are an appealing feature of the extensive 3,400m² open span interior.

With a seating capacity of over 3,000, Fly Palmy Arena features new retractable seating units, which are versatile and allow for a range of venue

layouts. A large corporate lounge overlooks Fly Palmy Arena, which can conveniently be converted into four separate corporate suites.

Fly Palmy Arena has four fully functional changing rooms that include heating, showers and toilets. An additional umpire changing room is located below the media lounges.

The Allflex Lounge overlooking Fly Palmy Arena works seamlessly as an office for event organisers and includes a private bathroom.

On the concourse, there is a purpose-built merchandise shop and ticket box. Internet and phone line requirements can be met with ease, in both the Allflex Lounge and merchandise shop.

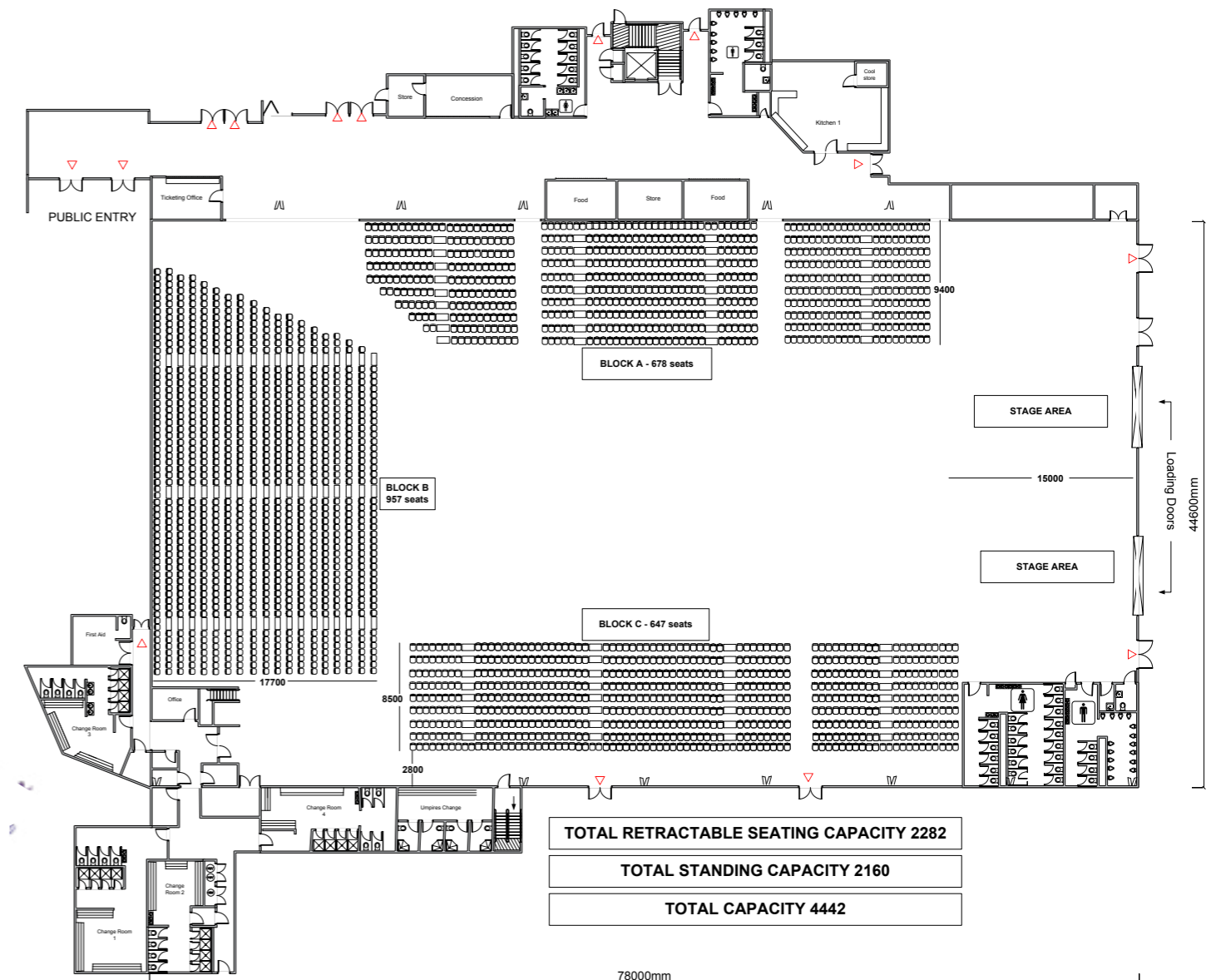


FEATURES:

- Sports markings for either 4 basketball courts, 4 volleyball courts, 18 badminton courts, 3 netball courts or futsal courts.
- Fully sprung beech sports floor.
- 13 x 14m mothergrid truss with side wings.
- Show courts for basketball or netball.
- Four changing rooms plus an umpires changing room.
- Two 6m x 6m loading doors.
- Ticketing office.
- Comprehensive range of stage modules available onsite.
- Fully integrated sound and PA system.
- Single phase and 3 phase (32amp and 63amp) power throughout.
- Retractable seating units.
- High-speed wireless internet available on arrangement.
- Large multipurpose concourse area.
- Merchandise office.
- Media lounges.
- Direct access to Arena 3.
- Fully adjustable LED lighting to features with ability to provide television standard show-court lighting.

PRICE:

Please enquire today for venue rental rates. Community and school rates available.





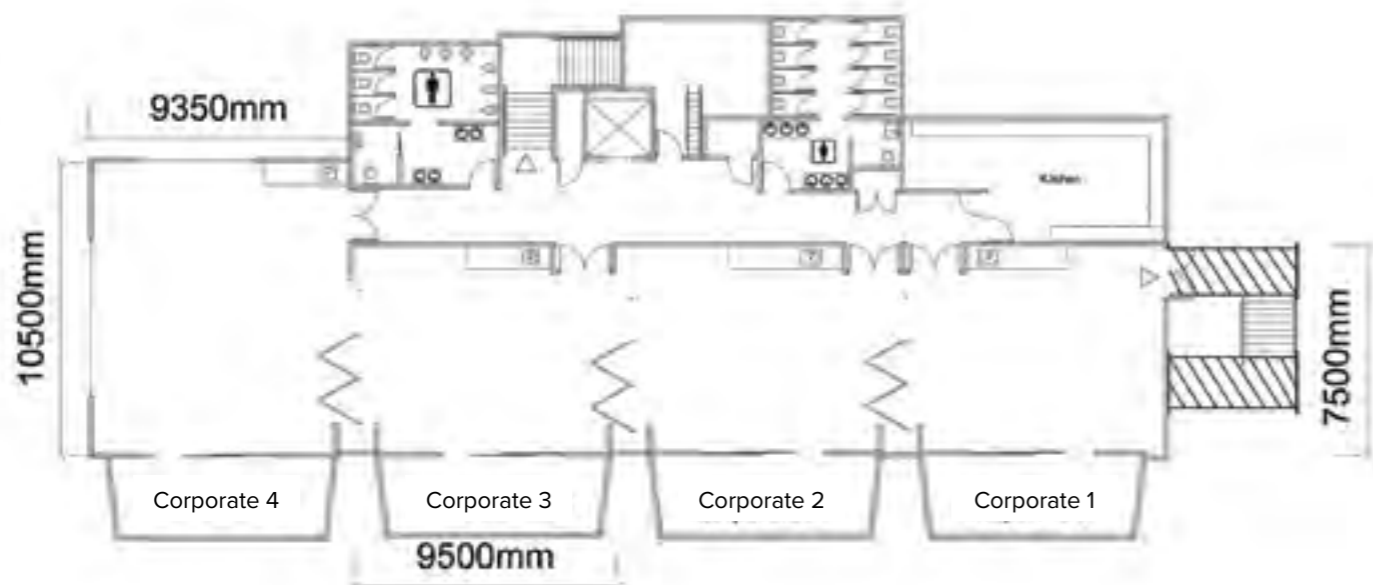
FLY PALMY ARENA CORPORATE LOUNGES

Fly Palmy Arena has four intimate corporate lounges overlooking the venue that can be used either individually or in conjunction holding a capacity of 60 per lounge or up to 240 across all four suites.

FLY PALMY ARENA MEDIA LOUNGES

Fly Palmy Arena has two Media Lounges overlooking the venue.

These two lounges are positioned perfectly for all events held inside the venue whether it be for an national sports tournament or a school volleyball tournament.



Corporate Lounges - Arena 2

MEDIA LOUNGES INCLUDE:

- TV platform with open viewing.
- Bi-fold windows overlooking main arena.
- Ladder for communications cabling.
- Significant outdoor space for truck parking.
- 3 phase power (32amp and 63amp).
- Kitchenette and toilet facilities.
- Full data connections.
- Air conditioning.
- Viewing window through to Arena 3.
- Internal and external access.

CORPORATE LOUNGES INCLUDE:

- Balcony overlooking the main arena.
- Kitchenette area.
- Air conditioning units.
- Sound system.

PRICE:

Please enquire today for venue rental rates. Community and school rates available.

ARENA 3

With a floor area of 2,100m² this popular indoor stadium is a great choice for medium-sized exhibitions, functions, sporting events, dinners and conference plenaries.

Arena 3 has internal access directly through to Fly Palmy Arena and the B&M Centre.

Situated centrally between our indoor stadiums, Arena 3 has internal access directly through to Fly Palmy

and the B&M Centre, making it an ideal supporting venue to provide additional floor space for a variety of event set-ups. With Arena 3's sport markings, permanent dividing net and the ability to set up portable seating, this is a great venue choice for smaller sporting fixtures, or, the venue can be transformed into a modern exhibition or cocktail function space using our portfolio of onsite carpet and draping for

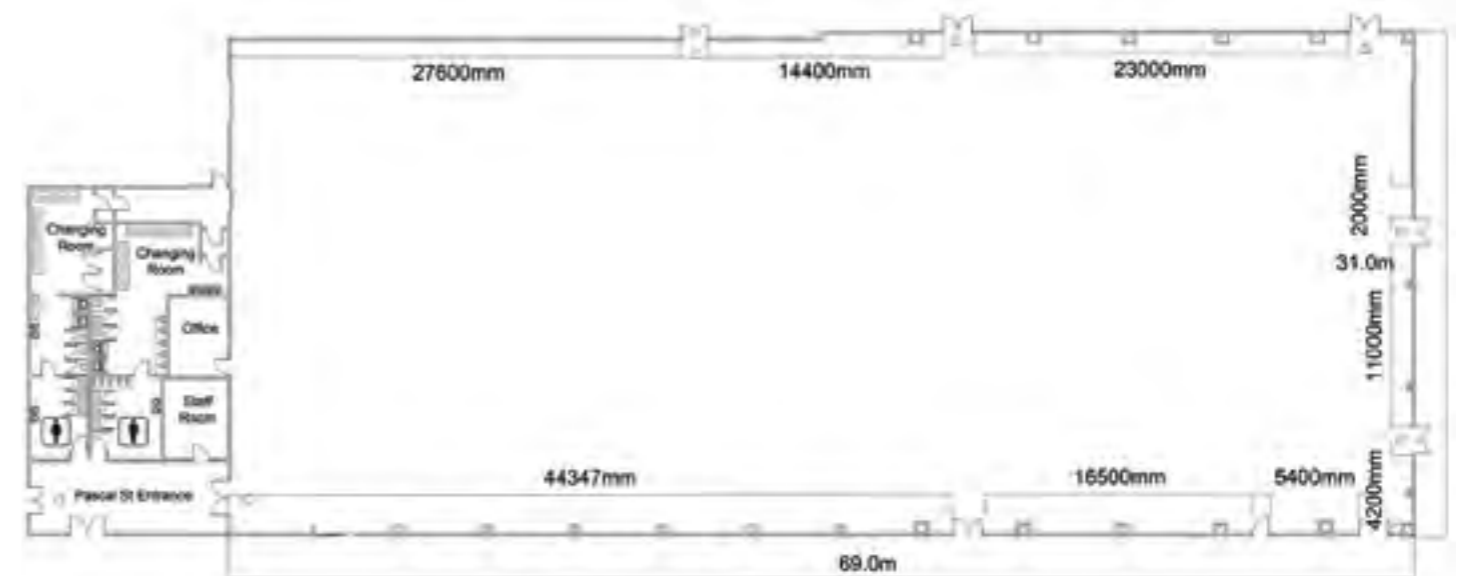
corporate events. There are two fully functional changing rooms with showers, heating and toilets and a designated kitchenette area.

FEATURES:

- Sports markings for either 2 basketball courts, 4 volleyball courts, 8 badminton courts, 2 netball courts, 1 senior futsal court, roller derby or skating circles for competitions.
- Quality timber floor.
- Connecting covered access to Fly Palmy Arena and B&M Centre.
- Two adjoining changing rooms and toilet facilities.
- Sound system and PA.
- 5.5m x 5m door loading capacity.
- Heating system.
- Portable seating and furniture for all event needs.
- Event organiser's office available by arrangement.
- Single and 3 phase power outlets throughout.

PRICE:

Please enquire today for venue rental rates. Community and school rates available.



Arena 3



B&M CENTRE (ARENA 4)

This purpose-built indoor community sports centre is the equivalent of 60 houses under one roof!

The B&M Centre is one of New Zealand's most extensive indoor sports facilities with a total floor area of 6,400m².

Arena 4 is comprised of the B&M Centre and Ballroom, which can be used together or divided into two separate spaces.

Arena 4 offers direct access to six fully functional changing rooms with showers, heating and toilets. An upstairs Mezzanine Floor overlooking the B&M Centre and Ballroom courts provides an ideal space for officials lounges or a breakout space. This is a multi-purpose venue with the ability to accommodate a wide range of sporting events or tournaments using our portable courtside

seating or can be transformed into a suitable corporate event venue using our portfolio of onsite carpet and draping.



B&M Centre - Arena 4

FEATURES:

- Sports markings in the B&M Centre for either 4 basketball courts, 6 volleyball courts, 4 netball courts, 16 badminton courts or 3 tennis courts.
- Sports markings in the Ballroom for either 3 basketball courts, 3 netball courts, 5 volleyball courts or 9 badminton courts.
- Fully sprung beech sports floor.
- Quality sports equipment and court fittings for primary codes.
- Electronic score boards.
- Score benches.
- 6 changing rooms.
- Medical first aid room.
- Quality PA and sound system.
- Event organisers office.
- 245m² mezzanine level gallery.
- Kitchenette facilities.
- Portable courtside seating.
- Food kiosk.

PRICE:

Please enquire today for venue rental rates. Community and school rates available.



ARENA 5

Located on the Waldegrave Street frontage, Arena 5 includes Bell Hall (630m²), the Barber Hall (1050m²), Waldegrave Lounge (405m²).

With direct access to Arena 1, these venues are ideal for providing additional supporting space for a variety of set-ups.

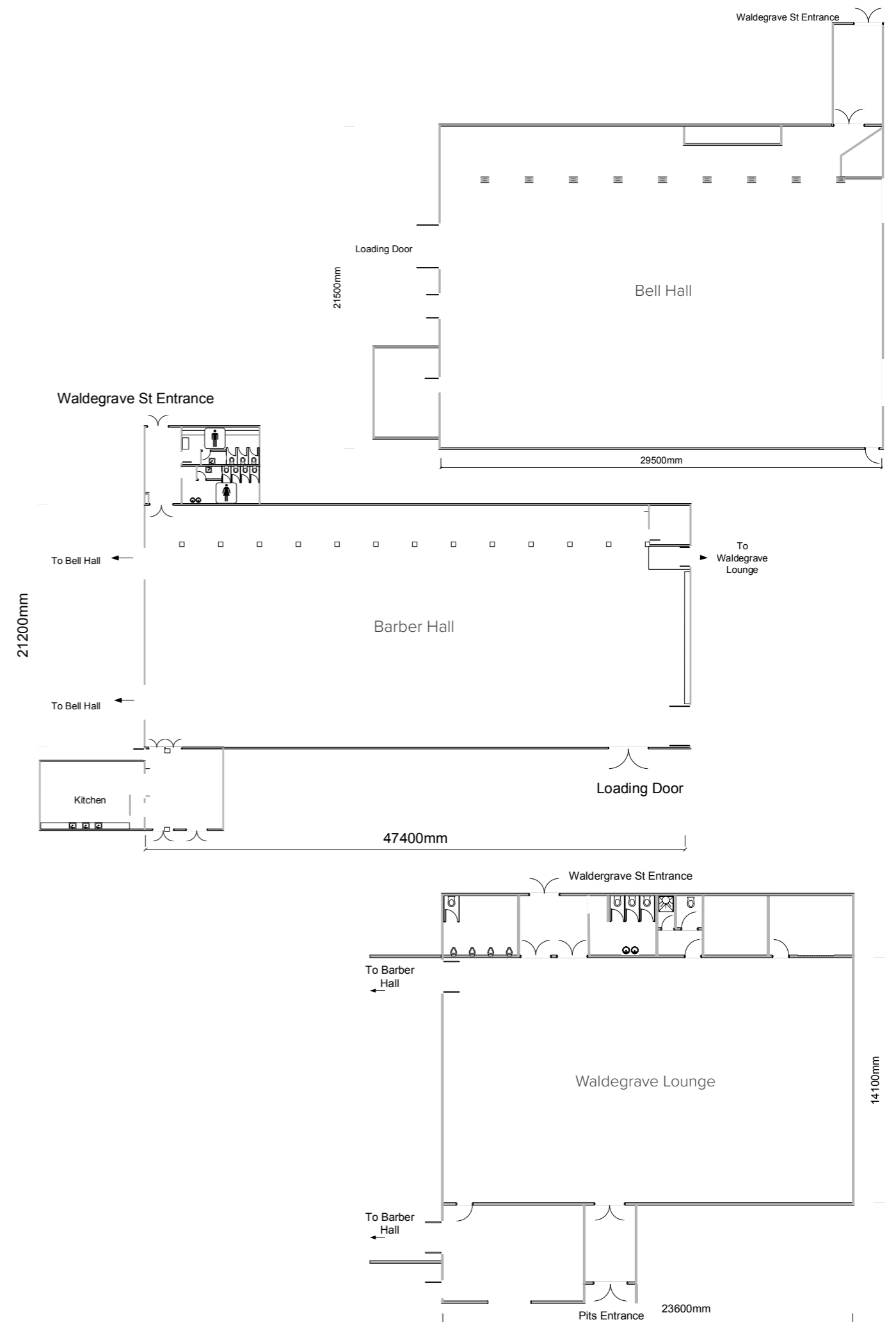
These popular interconnecting facilities are an ideal choice for community events or for a range of community sports such as skating, table tennis, indoor bowls and marching.

FEATURES:

- The Bell Hall features sports markings for roller derby and skating circles.
- Kitchen facilities.
- Full toilet amenities.
- Sound system.
- 175 onsite car parks.
- Direct access to Arena 1.
- Inter-connecting access between the venues

PRICE:

Please enquire today for venue rental rates. Community and school rates available.





ARENA 6

Arena 6 is also known as the back fields and is made up of three highly regarded training and playing fields that complement Arena 1's main oval. One of the three fields is an all-weather artificial turf with permanent markings for rugby and football. The artificial turf was completed in 2019 and is regarded as a world-class playing field.

During the summer months, the back fields are mainly used by summer football.

The Arena 6 Artificial Turf is certified by World Rugby standards and is the first of its kind in the region. The backfields are in regular use for summer and winter club sport. In winter, the grounds are used by rugby, rugby league and football for both training and as match day playing fields.

The Arena six playing fields can be hired in conjunction with the Arena one oval to host entertainment or activities.

They can be hired in conjunction with the main Arena to host outdoor entertainment or activities.

At the southern end of the back fields, there is additional field space which provides an additional area for warm-ups or trainings. Direct access to 4 changing room spaces are accessible from the back fields, as well as being in close proximity to Arena 1 and B&M Centre facilities.



FEATURES:

- Highly regarded artificial turf with markings for rugby and football.
- All season use.
- Artificial turf offer both training and match day playing fields.
- Changing room facilities.

PRICE:

Please enquire today for venue rental rates. Community and school rates available.



KŌWHIRINGA KAI CATERING

Mouth-watering delicacies for all occasions; from meetings to multi-day conferences, from luncheons to large gala dinners – Absolute Caterers design the perfect menu to complement your event. Experience the culinary expertise, the creative flair and the dedication to excellence that is the hallmark of Absolute Caterers; your event catering specialists. The team design their

menus to ensure you are always impressed: simply describe your occasion, and the team will provide event catering that will exceed your expectations.

Your dedicate venue + event coordinator can provide you with a copy of our catering menu pack.



WHARE NOHO ACCOMMODATION

Hotels	Star	Rooms	Capacity
Copthorne Hotel Palmerston North	4	107	182
Distinction Coachman Hotel	4	78	217
Distinction Palmerston North Hotel	4	85	200
Quest Palmerston North	4	41	96
Quality Suites Central Square	4	37	85
		348	779

Motor Lodges/Inns	Star	Rooms	Capacity
Arena Lodge	4	16	74
Bentleys Motor Inn	4	22	55
BKs Motor Lodge	4	43	70
Camelot Motor Lodge	4	20	44
Chancellor Motor Lodge	4	18	38
City Corporate Motor Inn	4	12	28
Cornwall Motor Lodge	4	28	90
Drovers Motor Inn	4	27	50
Fitzherbert Regency Motor Lodge	4	20	60
Hacienda Motor Lodge	4	25	75
Harringtons Motor Lodge	4	12	40
		243	624

Motels	Star	Rooms	Capacity
Aubyn Court Spa Motel	4	30	90
Avenue Motel	4	13	50
Bella Vista Motel	4	18	61
Big Five Motel	4	14	46
Pavilion Motel	4	16	34
Rose City Motel	4	26	77
Shadzz Motel	4	25	47
		142	405
Total 4-star accommodation		733	1,808

Additional Motels

There are an additional 18 motels in Palmy with a 3 or 3.5-star accommodation rating. These are comprised of 373 individual rooms that can accommodate another 1,001 guests.



RĒHIA KI PAPAIOEA THINGS TO DO IN PALMY

Visit the Victoria Esplanade

Palmy's premier park and historic botanical gardens were established in 1897 and are home to the New Zealand Rose Trial Garden. Explore 26 hectares of bush walks, bike tracks and formal gardens. It has something for everyone in the family – thousands of mature trees, splendid roses, barbecues, croquet lawns... and the kids will love the Junior Road Safety Park, Wildbase Centre, miniature railway, playground and paddling pool.



New Zealand Rugby Museum

The New Zealand Rugby Museum contains New Zealand's biggest and most comprehensive collection of rugby memorabilia and records, including some of the world's rarest rugby artefacts.

You'll be rewarded with a trip back in time exploring the rich history and folklore of the nation's mighty game with an unmasking of its rugby heroes and legends.

Te Manawa Museum

Te Manawa is a cultural heart of the city that thrives on discovery – entertaining and inspiring people from all walks of life for more than 40 years. It's more than a museum and a gallery. It's a place where concepts and communities come together. With an engaging programme of exhibitions and events, as well as an extensive collection of taonga (treasures), Te Manawa offers a unique opportunity to experience and participate in the stories of our past, present and future.

National Wildbase Centre

Central Energy Trust Wildbase Recovery is a specialist centre providing shelter and care for native wildlife recovering after treatment at Massey University's Wildbase Hospital. The centre releases patients back into the wild once they have recovered. There are also resident animals at Wildbase including whio (blue duck), kereru, baby tuatara and red-crowned kakariki.



He Ara Kotahi

Our Manawatū River Framework recognises the importance of the awa to the city. The Framework is about enhancing physical connections with the river environment, expressing Rangitāne O Manawatū's connection with the awa, and creating a destination with things to do. The multi-award-winning project includes Ahimate Reserve, He Ara Kotahi bridge and Urban Eels platform. Ahimate is home to the city's most popular riverside beach, a dog agility park and fenced enclosure, mountain bike tracks and a natural playground. On He Ara Kotahi pathway you'll traverse dairy farms, forests, pā sites, a military camp, streams and a river in less than nine kilometres. Along the walkway, you will find Urban Eels. This award winning project is a hands-on experience that raises awareness of traditional cultural practices, and the significant mauri, or life force, of this water. Ultimately, the Framework ensures each year there will be more things to do, and more people will spend time at our awa.





PALMY[®]
VENUES

venuespn.co.nz / office@venuespn.co.nz / 0800 383 688