



PALMY VENUES

# WEDDING

PUKA MŌHIOHIO  
INFORMATION BOOKLET



# NGĀ UPOKO CONTENTS

- 3 Welcome**
- 4 Packages**
  - Silver Package
  - Gold Package
  - Platinum Package
- 6 Menu Options**
  - Canapé Menu
  - Main Menu
- 8 Venue Options**
  - Elwood Room
  - The Gallery
  - Conference Room
  - J.A. Russell Supplies Lounge
- 10 FAQs**
- 11 Palmy Map**



# NAU MAI RĀ WELCOME

## Congratulations on your engagement!

Palmy Venues boasts purpose-built event spaces to cater for small intimate weddings or large formal receptions with unique flexibility across two venues; Central Energy Trust Arena and the Palmy Conference + Function Centre. Planning your perfect wedding has never been easier.

Our wedding packages are designed to offer value for money without compromise, and exceptional service, food and ambiance. Every package includes a dedicated Venues + Events Coordinator to help ensure your wedding goes off without a hitch and exceeds your expectations. Your Venues + Events Coordinator will put together floor plans, provide advice on scheduling and run sheets, direct you to theming and entertainment specialists, and introduce you to our AV, operations and catering teams.

Our onsite catering team, Absolute Caterers, have many years of combined industry experience both locally and internationally.

The team knows the key to a fantastic wedding is not just the food but the service as well, so whether you've planned a small, intimate affair or a large scale, sumptuous event, the team at Absolute Caterers provide wedding catering to make your day perfect.

## Why we're the perfect venue



Event coordinators



Onsite audio-visual equipment



Multiple venues under one roof



City centre location



Operations staff



Onsite catering

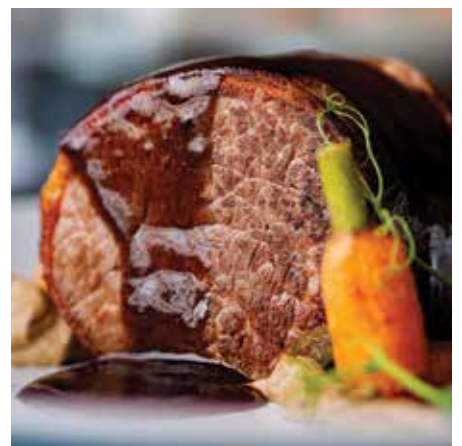


Walking distance to accommodation



Free car parking

# KŌWHIRINGA RATONGA PACKAGES



## Silver package

**\$80 + GST per person\***

**Venue hire from 5pm - 12am**

**Sound system**

**Lectern + microphone**

**Dancefloor** | subject to availability

**Chair covers**

**Linen napkins**

**Table cloths**

**Menu** | includes two mains, two sides, two salads and one dessert, served buffet style

## Gold package

**\$100 + GST per person\***

**Venue hire from 5pm - 12am**

**Sound system**

**Lectern + microphone**

**Dancefloor** | subject to availability

**Chair covers**

**Linen napkins**

**Table cloths**

**Canapès** | three on arrival canape items, tray served

**Menu** | includes two mains, two sides, two salads and one dessert, served buffet style

## Platinum package

**\$110 + GST per person\***

**Venue hire from 5pm - 12am**

**Sound system**

**Lectern + microphone**

**Dancefloor** | subject to availability

**Chair covers**

**Linen napkins**

**Table cloths**

**Canapès** | three on arrival canape items, tray served

**Menu** | includes two mains, three sides, two salads, and one dessert, served banquet style to tables

# KŌWHIRINGA KAI MENU OPTIONS

## Canapès | Cold

**Citrus marinated ceviche** | coriander emulsion

**House smoke salt salmon tartar** | stuffed  
in sesame coated cornet with red onion  
crème fraiche

**Hoisin roasted duck pancake**

**Beef carpaccio en croute** | with parmesan crisp

**Szechuan pepper crusted beef** | parmesan  
puff + sweet onion jam

**Cherry tomato, mozzarella, basil, prosciutto  
skewers**

**Oyster** | virgin mary cocktail spoon

**Rare thai beef fillet** | on ginger rubbed  
croutons

**Salt cured salmon + prawn cocktail spoons**  
| with wasabi mayo

**Lamb** | sweet potato rosti, cranberry

## Warm

**Maple roasted pumpkin tartlets** | whipped  
feta, hazelnut crumb

**Porcini mushroom + parmesan arancini** |  
smoked garlic aioli

**Fennel roasted pork belly** | glass crackling,  
roasted granny smith apple

**Merlot braised beef cheek tartlets** | english  
mustard mayo

**Prosciutto + crispy filo wrapped asparagus** |  
porcini mushroom sauce

**Deep fried italian tallegio cheese** | with onion  
marmalade

**Zataar crusted lamb cutlets** | with tzatziki

**Seared scallop** | parsnip crème, mango +  
lime salsa

**Smoked salmon** | + asparagus tart

**Buttermilk fried chicken** | kewpie mayo

---

## Sweet

**Chocolate mousse cups**

**Vanilla custard tartlet** | topped with candied  
berries + chocolate ganache

**Torched lemon tart** | baked meringue

**Tiramisu cup**



## Mains

**Moroccan spiced leg of lamb** | parsley, mint + lemon pesto

**Roasted pork loin** | vanilla apple sauce, crackling, pan jus gravy

**Lemon + thyme roasted chicken ballotine**

**Authentic green thai chicken curry** | basmati rice

**Seafood mornay** | selected seafood, bechamel

**Herb crusted prime nz strip loin** | roasted garlic gravy, horseradish cream

**Slow cooked beef + tomato ragout** | fresh herbed pappardelle pasta

**Red wine braised beef cheeks** | herbed mash

**Braised beef bourguignon** | caramelised onion, mushrooms, smoked bacon

**Sticky sesame pork belly** | szechuan noodles

---

## Sides

**Vegetable lasagne** | grilled vegetables, bechamel

**Roasted pumpkin spinach feta penne pasta gratin**

**Balsamic roasted beetroot** | cumin, brown sugar, balsamic

**Cauliflower** | cheese sauce, garlic, herbs

**Steamed potatoes** | mint butter

**Garden peas** | mint butter, salt flakes

**Asian greens** | greens, garlic, ginger, tamari

**Green beans** | lemon, garlic

**Chargrilled broccolini** | toasted almonds

**Garlic bread** | ciabatta, garlic butter, herbs

**Baby roasted carrots** | zingy honey + orange dressing

**Root vegetables** | roasted pumpkin, parsnips, carrot, kumara

**Potatoes** | roasted agria potatoes, garlic + herb

**Corn** | smoked paprika, lime, cilantro, parmesan

**Chargrilled broccolini** | toasted almonds

**Roasted cauliflower** | parsley, mustard seed

**Potato bake** | layered potato, cheese sauce, sea salt flake

## Salads

**Caesar** | cos, iceberg, bacon, egg, balsamic croutons, parmesan

**Broccoli + cranberry** | lemon mayo, parmesan

**Spring garden** | crisp lettuce, vine tomato, cucumber, radish, herbs

**Greek** | cherry tomato, feta, olives, cucumber

**Roasted kumara** | cumin, honey, red onion, feta

**Roasted pumpkin** | maple bacon, avocado

**Rocket, pear, parmesan, toasted walnuts**

**Caprice** | medley tomato, basil, mozzarella, balsamic

**Candied walnut** | bacon, greens, roasted red capsicum, cipollini

**Crunchy peanut slaw** | edamame, cabbage, capsicum, carrot, spring onion, coriander, peanut + sesame dressing

**Cucumber, bean + herbed salad**

**Wild rice, chickpea + herb salad**

**Roasted pumpkin** | grilled corn, red cabbage

---

## Dessert

**Fruit platter** | chocolate sauce

**Black forest trifle**

**Apple + berry crumble** | custard

**Tiramisu slice**

**Brandy cases** | cream

**Kiwi self-saucing pudding**

**Lemon meringue pie**

**Cheesecake**

**Decedent chocolate brownie**

**Pavlova**

**Glazed profiteroles**

**Gateaux torte cake**

**Eclairs**



# KŌWHIRINGA TAIWHANGA VENUE OPTIONS



## Elwood Room

### Palmy Conference + Function Centre

The Elwood Room is located on the ground floor at the Palmy Conference + Function Centre with easy accessibility, plus the convenience of a loading dock at the rear of the venue. Portable staging and lighting options are available in the Elwood Room, plus a dancefloor, buffet or photobooth can be installed with ease.

The Elwood Room can be sectioned off to create a smaller cocktail and canapés area on arrival, before guests move into the reception area, or alternatively the Foyer or The Gallery would be suitable spaces for arrival drinks.



## The Gallery

### Palmy Conference + Function Centre

The Gallery is flooded with natural daylight, with a beautiful setting and view down George Street. The light and airy Gallery provides the perfect setting for a wedding ceremony or smaller wedding reception.

The Gallery is located on the first floor of the Palmy Conference + Function Centre and can be accessed by stairs or a lift.

This venue has a permanent bar and is a popular choice for a cocktail function or a small intimate sit-down dinner.





## Conference Room

### Palmy Conference + Function Centre

Like the Elwood Room, the Conference Room provides the perfect space for larger weddings. Located on the first floor, the Conference Room can easily be used in conjunction with The Gallery for pre-dinner drinks, allowing guests to flow down the hallway into the Conference Room for the reception.

The Conference Room has a permanent stage with unobstructed sightlines and can be sectioned off to a smaller wedding venue with the use of floor-to-ceiling soundproof folding doors. The Conference Room also provides plentiful space for a dancefloor, buffet or photobooth to be installed.



## J.A. Russell Supplies Lounge

### Central Energy Trust Arena

The J.A. Russell Supplies Lounge is the premium viewpoint at Central Energy Trust Arena and boasts 360-degree views of Palmerston North on level 4 of the grandstand.

The J.A. Russell Supplies Lounge is accessible via two lifts with extensive free onsite car parking. Flooded with natural light, the Lounge also features a smaller meeting room which can be easily converted into a buffet/catering area, children's space or a photobooth room. The dancefloor can be installed in this venue with ease, with portable bars providing flexible setup options.

For those rugby and speedway fans, you can enjoy having a few photos on the field or track, in the Grandstand and in the tunnels!



# PĀTAI AUAU FAQ'S

## **Can we do a meal tasting?**

Yes, we can arrange a meal tasting closer to your wedding date.

## **Can we choose our own caterers or cater ourselves?**

Unfortunately, no. You will be required to use our contracted catering company, Absolute Caterers, who provide outstanding food and service.

## **Will the menu be able to cater to different dietary requirements?**

Yes, we will work with you to ensure all of your guests' dietary requirements are catered for.

## **Do you allow BYO?**

Unfortunately, we cannot accommodate BYO, however we have an extensive wine and beverage list to suit every taste and budget.

## **How many people can be seated at a table?**

Both round and trestle tables can seat eight people, alternatively you can opt for an "open ended" option to seat six at a table.

## **Do you provide free onsite parking?**

Yes, at Central Energy Trust Arena we have a large carpark located onsite. At the Palmy Conference + Function Centre we have free car parking at the rear of the building, with a vehicle bay directly in front of the entrance for the bridal party.

## **When do I pack down?**

Our staff will complete pack down and collect any stray items for you to pick up the following week.

## **Who will be our point of contact on the day?**

Unless advised otherwise your contact will be one of our operations staff who will be there on the day to ensure everything runs smoothly.

## **Are we allowed a band/DJ?**

Yes, both are allowed at the venue. Please arrange a set up time prior to your wedding with the Venues + Events Coordinator.

## **What time does the bar/venue close?**

The bar will be closed by 11:30pm and all guests are required to have left the building by 12am.

## **What are the access times for decorating/deliveries?**

We try our best to accommodate access for decorating and deliveries. Depending on room availability and other event bookings, we aim to have your room fully set the day prior, leaving you ample time to add your finishing touches.

## **Can you store our cake overnight?**

Yes we can. Please enquire with the Venues + Events Coordinator to make arrangements.

## **When do I need to provide final numbers and dietary requirements by?**

Final numbers and dietary requirements must be confirmed at least 7 days prior to your wedding date. These will be the minimum numbers charged for.

## **Can we bring our own decorations?**

Yes, but they will need to be set up by yourself. Only blu tack is allowed on walls and windows.









## **Are both venues suitable for wheelchair access?**

Yes, our venues have lifts and we have disability parking options available at Central Energy Trust Arena and the Palmy Conference + Function Centre.

## **What is the cost for children?**

Children under five years old are free if they are sharing from their parent(s) plate. Children aged between five and ten years old are half the package per-person price.



- 
- 
**CONFERENCE + FUNCTION CENTRE**
- 
**Train Station**
- 
**Bus Station**
- 
**Cophorne Hotel**
- 
**DC Distinction Coachman Hotel**
- 
**Q Quest Hotel**
- 
**D Distinction Hotel Palmerston North [Cuba Street]**



**PALMY**  
VENUES

[venuespn.co.nz](http://venuespn.co.nz)

Freephone 0800 383 688

---

*Central Energy*  
*Trust* **ARENA** 

61 Pascal Street  
Palmerston North

[office@venuespn.co.nz](mailto:office@venuespn.co.nz)

---

**PALMY**  
CONFERENCE +  
FUNCTION CENTRE

354 Main Street  
Palmerston North

[info@venuespn.co.nz](mailto:info@venuespn.co.nz)