

# EDISONS

*Whangamata*

CUSTOMER INFORMATION

A UNIQUE EVENTS VENUE  
THAT BRINGS TOGETHER THE  
NOSTALGIA OF THE PAST  
WITH MEMORIES OF THE  
PRESENT



WELCOME TO EDISONS, A TRULY  
EXCEPTIONAL EVENT SPACE NESTLED  
WITHIN THE HISTORIC WALLS OF  
THE OLD ICONIC WHANGAMATA  
CINEMA.

LOCATED WITHIN THE CHARMING CINEMA LANE,  
EDISONS STANDS AS A BESPOKE VENUE PERFECT  
FOR PRIVATE PARTIES, WEDDINGS, PHOTOSHOOTS,  
FILM VIEWINGS, CONFERENCES, THEATRE, COMEDY  
NIGHTS AND ANY OTHER EVENT WORTHY OF  
CELEBRATION.

Our devoted team at Edisons is committed to exceeding your expectations, ensuring an extraordinary experience from the very beginning to the final moments. We have meticulously selected a roster of vendors to collaborate with, and are excited to see how you go about curating the event you have always envisioned in this special Whangamatā setting. Our aim is to seamlessly blend nostalgia with contemporary elegance, creating an ambiance that sets the stage for timeless memories.



# TABLE OF CONTENTS

OUR STORY

THE SPACE

THE CINEMA HALL | THE LANEWAY | FLOOR PLANS

VENUE HIRE

BEVERAGE LIST

OUR PARTNERS

CATERING | HIRE EQUIPMENT | PHOTOGRAPHERS | WEDDING PLANNING  
FLORISTRY & PLANTS | TABLEWARE | FURNITURE

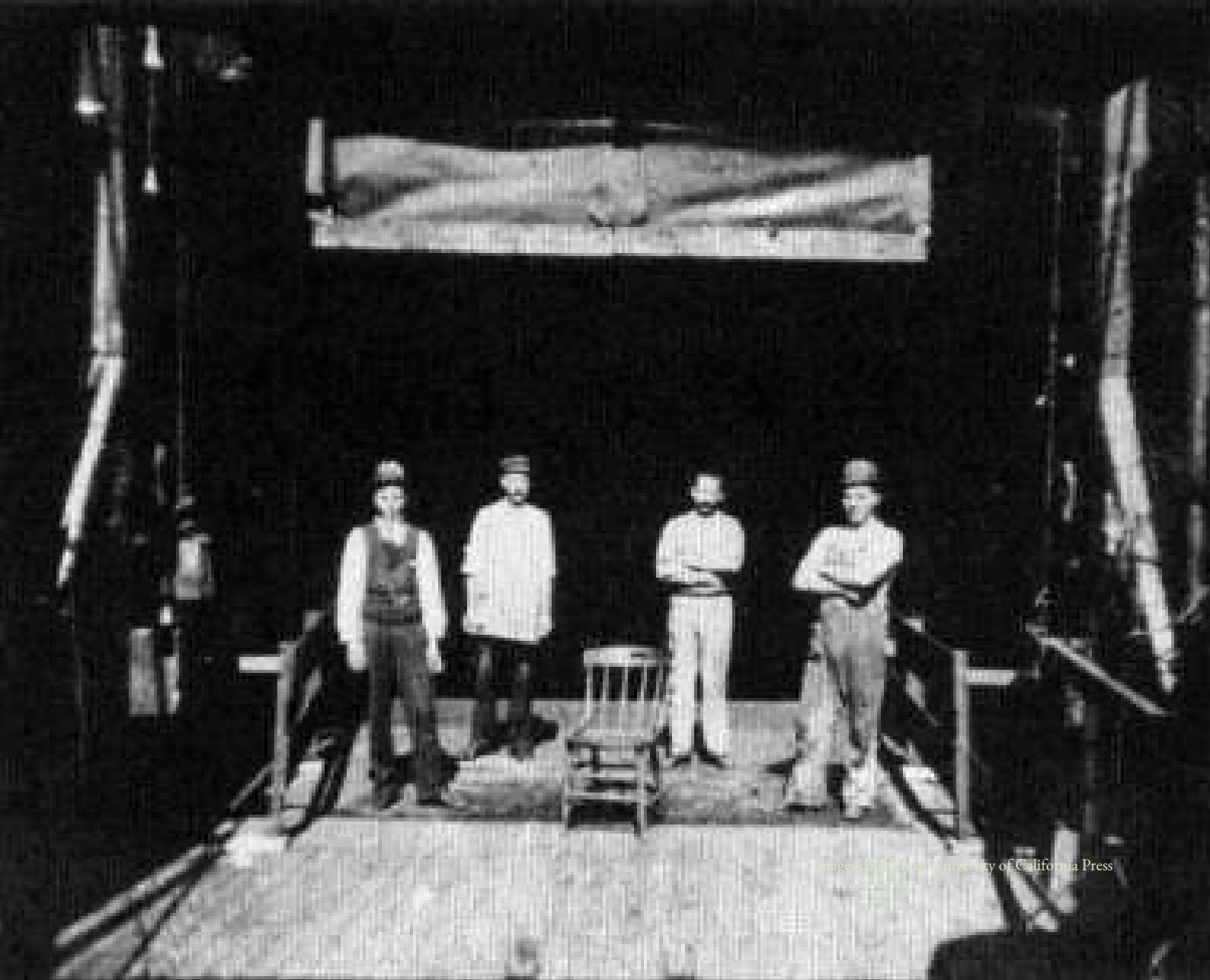
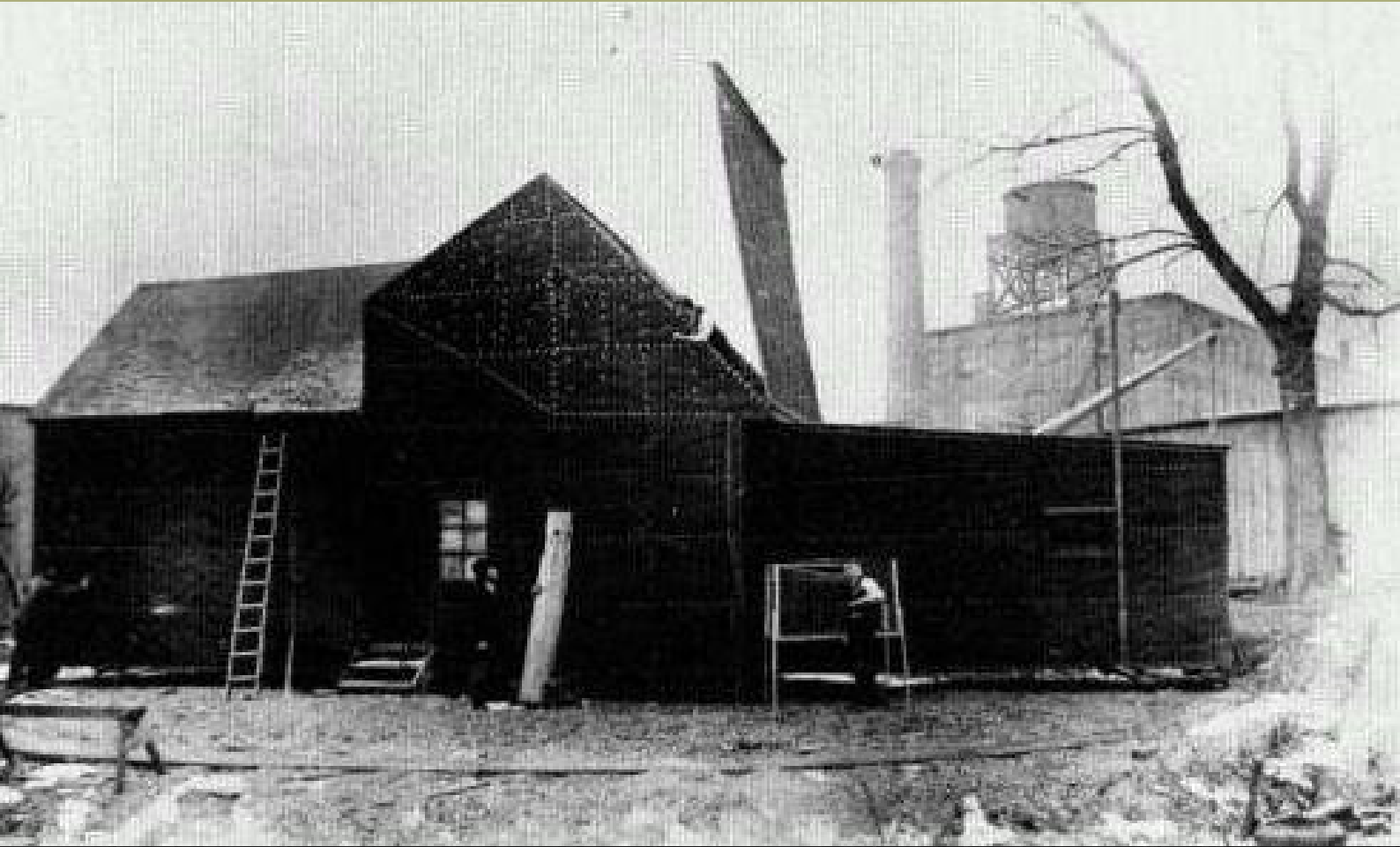
FAQ'S

CONTACT US

# OUR STORY

THE STORY BEHIND EDISONS IS INSPIRED BY THE VISIONARY THOMAS EDISON, THE RENOWNED AMERICAN INVENTOR WHOSE IMPACT ON THE WORLD OF ENTERTAINMENT IS UNPARALLELED. EDISON'S THEATRE, ESTABLISHED IN 1894, WAS AN EARLY PIONEER IN FILM PROJECTION, WHILE EDISON'S BLACK MARIA BECAME THE WORLD'S FIRST FILM STUDIO. HIS INVENTIVE SPIRIT LED TO THE CREATION OF THE KINETOSCOPE AND THE KINETOGRAPH, KEY ADVANCEMENTS THAT TRANSFORMED VISUAL STORYTELLING AND SHAPED MODERN CINEMA INTO THE IMMERSIVE EXPERIENCE IT IS TODAY.

In homage to these historical roots and the cinema's legacy, we proudly bear the name Edisons. Just as the old cinema and projector room have projected countless films over the years, we embrace the spirit of cinematic innovation and celebrate it in every event hosted within our venue.



# THE SPACE

AT EDISONS, EVERY ASPECT OF THE SPACE HAS BEEN THOUGHTFULLY CURATED TO CREATE A DISTINCT AMBIANCE THAT PAYS HOMAGE TO THE BUILDING'S HERITAGE WHILE OFFERING A VERSATILE CANVAS FOR YOUR SPECIAL OCCASION. THE SUBTLE ART DECO INFLUENCE ADDS A TOUCH OF ELEGANCE, AND THE MINIMALIST DESIGN ALLOWS YOU THE FREEDOM TO PERSONALISE THE SPACE TO MATCH YOUR UNIQUE VISION.







## THE CINEMA HALL

The cinema hall, a true haven for event enthusiasts, ensures a seamless experience regardless of the weather. This magnificent space can adapt to suit your needs, whether it's hosting a sit-down dinner or transforming into a vibrant dance floor.

### SPECS

9 x 17m (truss height: 4.5m)  
BOH Kitchen 3 x 4m



## THE LANEWAY

The laneway, a special feature of Edisons, extends beyond the venue, providing an inviting outdoor extension to the festivities. It serves as a delightful spot for a drinks bar or a few outdoor seats, allowing guests to enjoy the fresh air amidst the celebration, particularly during the pleasant summers in Whangamatā.

### SPECS

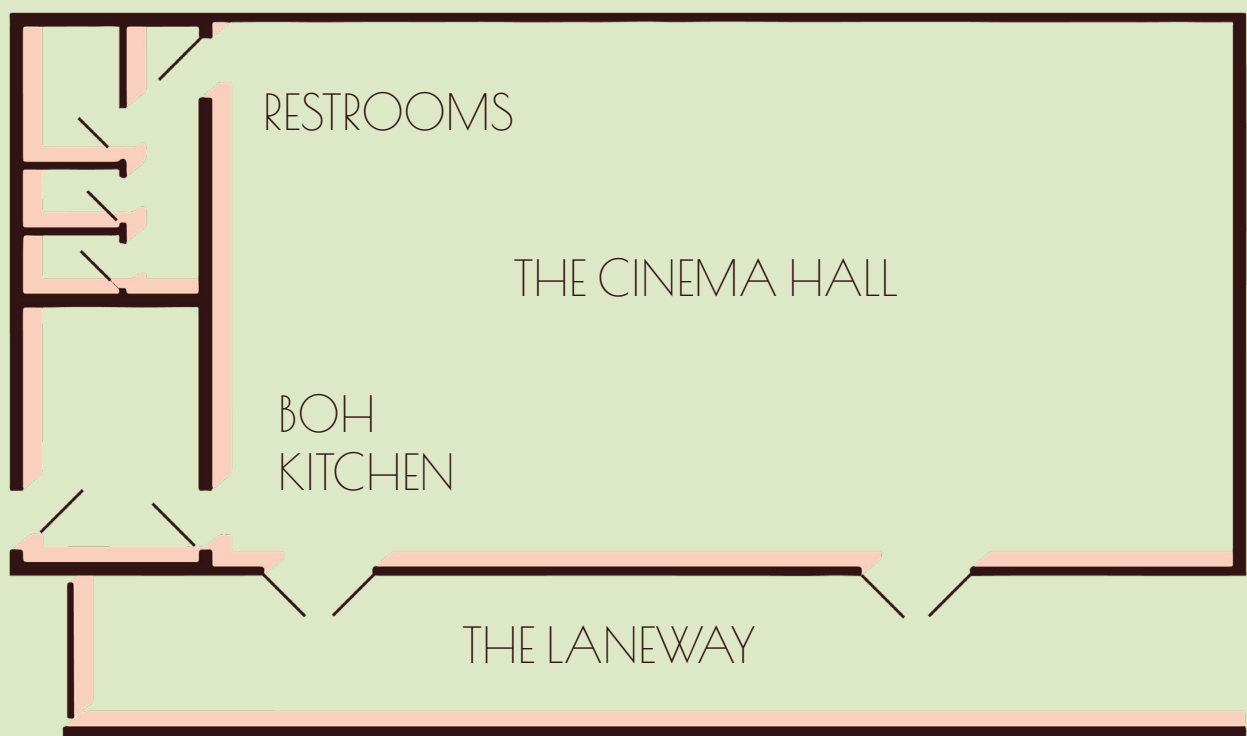
2.5 x 17.5m

---

AT EDISONS, WE TAKE GREAT JOY IN COLLABORATING WITH YOU TO TURN YOUR BIGGEST DREAMS INTO REALITY. OUR GOAL IS TO ENSURE THAT EDISONS BECOMES AN EXCEPTIONAL AND UNFORGETTABLE EVENT SPACE, TAILORED TO YOUR PREFERENCES AND DESIRES. LET US WORK TOGETHER TO CREATE CHERISHED MEMORIES IN THIS BEAUTIFUL AND MEMORABLE SETTING.

*Whether you're looking to have a small soiree in the laneway, create a private dinner in the Cinema Hall or hold the event of a lifetime both inside and out - we can work with you on your specific needs. Get in contact with us to talk about your special event.*

# FLOOR PLAN





# VENUE HIRE

AT EDISONS, WE UNDERSTAND THE SIGNIFICANCE OF YOUR WEDDING DAY, REGARDLESS OF ITS STYLE OR SCALE. WHETHER YOU CHOOSE A SMALL INTIMATE GATHERING, A SOPHISTICATED SIT-DOWN DINNER, A TRADITIONAL CULTURAL CEREMONY, OR A RELAXED COCKTAIL-STYLE EVENING, WE CATER TO ALL YOUR PREFERENCES. OUR VERSATILITY ENSURES THAT YOUR SPECIAL DAY IS CELEBRATED JUST THE WAY YOU ENVISION IT, WITHOUT COMPROMISE.



## OUR RATES

Monday to Wednesday events: \$600 + GST

Thursday & Sunday events: \$1000 + GST

Friday & Saturday events: \$1500 + GST

---

## VENUE CAPACITY

Seated dinner/reception event: 100 pax

Cocktail style event: 170 pax

Theatre style: 100 pax

---

## INCLUSIONS

Caterers pop up kitchen with oven, prep benches, and 3 phase power

Sound system for PA and music

Hot water urn and mugs

Glassware

Plateware and cutlery for up to 50 pax

Cleaning post event (everything brought to the venue for the event, must be removed by 9am the following day).

---

## ADD-ONS

Folding walnut chairs (up to 70): \$7.50 + GST each

Wooden tables (up to 10): \$30 + GST each

Projector: \$50 + GST

White board: \$25 + GST

Event planning/management/coordination: Price on request

---

*\*Please note we are a licensed venue, and bar service is additional to venue hire.*



# BEVERAGE LIST

---

Sparkling	Da Luca Prosecco, Veneto, Italy	9 / 40
	Quartz Reef Methode Traditionnelle Brut, Central Otago	12 / 60
	Alpha Domus Beatrix Sparkling Rosé, Hawkes Bay	9 / 40
	Mumm Grand Cordon, Champagne, France	120
White	Kumeu River Estate Pinot Gris, Kumeu	10 / 50
	Jules Taylor Sauvignon Blanc, Marlborough	9 / 40
	Craggy Range Te Muna Sauvignon Blanc, Martinborough	10 / 50
	Kumeu Village Chardonnay, Kumeu	9 / 40
	Kumeu River Estate Chardonnay, Kumeu	13 / 65
Rose	Maison Fortant Lux Rose, Languedoc, France	9 / 40
	Rockburn Stolen Kiss Rose, Central Otago	10 / 47
	Man O'War Pinque Rose, Waiheke Island	12 / 55
Red	Te Mata Estate Gamay Noir, Hawkes Bay	10 / 45
	Te Mata Estate Merlot Cabernets, Hawkes Bay	10 / 45
	Trinity Hill Gimblett Gravels Syrah, Hawkes Bay	70
	Loop Road Pinot Noir, Central Otago	12 / 60
	Rockburn Pinot Noir, Central Otago	80
Beer, Cider, RTD	Peroni	8
	Emersons Pilsner	10
	Sawmill Hazy Pale Ale	10
	Sawmill Nimble Pale Ale 2.5%	10
	Sawmill Hazy Bare Beer 0%	9
	Three Wise Birds Cider, Bach Life	9
	Pals	8
	Scapegrace	8
Non-alcoholic	Antipodes sparkling water 0.5l, 1l	6 / 9
	Coca Cola, Sprite	4
	Almighty Sparkling - Blood Orange	5
	Daily Organics 0% Blanc - Peach and Thyme	8

---

# OUR PARTNERS

OUR TRUSTED TEAM OF INDUSTRY EXPERTS TAKE GREAT PRIDE IN THEIR WORK, AND WE HAVE FULL CONFIDENCE THAT THEY WILL EXCEED EXPECTATIONS AS SUPPLIERS AND STYLING PARTNERS FOR EDISONS.

## CATERING

Amador Kitchen  
Blank Canvas Catering  
Food by Wild Wood Fire  
Kitchenese Deli  
Olive Jay Cakes  
Sugar Fish Catering

---

## EVENT HIRE EQUIPMENT

Whangamatā Party Hire  
Peninsula Party Hire  
Waihi Hire

---

## PHOTOGRAPHERS

Emily Hart - A Little Bit Snappy  
Jackson Bright  
Jacob Haverland  
Justin Aiken

---

## WEDDING PLANNING

Coromandel Weddings  
Toast

## FLORISTRY & PLANTS

Marigold Merchant  
On My Hand  
The Green Room

---

## TABLEWARE

Royal Laboratorie  
Tble. Linen

---

## FURNITURE

Twelve Tables

---

We are always open to your preferences and collaborating with new and talented creative vendors.





# FREQUENTLY ASKED QUESTIONS

## IS THERE PARKING?

There is street parking available, but we don't have any allocated private parking, therefore we encourage walking or car pooling to events. For weddings, it is recommended to have a shuttle to transport your guests home at the end of the evening.

---

## WHO SETS UP & WHEN?

You will have access to the events space from 10am the day of your event booking to get set up. We will meet to give you access to the venue, and return before your event begins if the bar is being used for your event. For weddings, we recommend a minimum two day booking to allow time for you and your vendors to set up before your big day.

---

## WHEN IS PACK DOWN?

All hired and personal items will need to be removed from the venue by 9am the following day.

---

## ARE THERE NOISE RESTRICTIONS?

Our sound system is perfect for ceremony music, and speeches during the event. Should you wish to have more than basic background music, we recommend booking a DJ or band for your event. Thames Coromandel District Council noise restrictions kick in at 10pm so our team will work with your entertainment on the night to make sure the levels are perfect. The outdoor laneway will close at 11pm, to reduce noise impact on neighbouring properties.

## HOW DO BEVERAGES WORK?

Cinema Lane holds an on licence, which means that we are responsible for the selling and service of alcohol at your event. We have a few different beverage options available and we are also open to any preferences you may have, please see our menu attached.

---

## WHAT TIME DOES EDISONS CLOSE?

The latest time for the bar to close and band/DJ to finish is 11.30pm, with guests exiting by midnight.

---

## WHAT IS THE SECURITY BOND?

We may charge a security bond fee of up to \$500, which will be invoiced 30 days prior to your event. After your event, we will inspect the premises within 48 hours and will refund your bond to your nominated bank account within 7 days provided that there is no damage to the property.

---

## IS SMOKING ALLOWED AT EDISONS?

Cinema Lane is a smoke free premises. If you or your guests would like to smoke/vape, please exit the premise via the laneway to Port Road footpath where you are able to smoke.

---

## PAYMENT TERMS

A 50% deposit of the booking fee will be paid at the time of your booking to secure your booking/event date. The balance payment, estimated bar spend and security bond will be invoiced 30 days prior to your event. All amounts payable will be in NZD and GST inclusive.

# CONTACT US

We would love to hear from you. Please reach out to discuss your event details!

## DETAILS

021 0228 4998

[hello@edisonsevents.co.nz](mailto:hello@edisonsevents.co.nz)

708 Port Road, Whangamatā

## YOU CAN FIND US ONLINE

[www.edisonsevents.co.nz](http://www.edisonsevents.co.nz)

or on instagram [@edisonsnz](https://www.instagram.com/edisonsnz)

# EDISONS

*Whangamata*