



ABBEVILLE ESTATE

THE COMMON

Cocktail Wedding

THE
GREAT
CATERING
CO.

WEDDING KIT

THE ESTATE

Concealed from even the most curiously inclined, Abbeville Estate is Auckland's boutique destination for weddings. Surrounded by trees and landscaped grounds, the beautifully restored heritage-listed buildings that make up the Estate offer you the opportunity to tailor the most extraordinary event. Our historic Church, barn and homestead are nestled within 11-hectares of rolling farmlands ensuring that Abbeville remains peaceful and private, yet surprisingly well located with proximity to Auckland Airport and the CBD.

Built in 1854, the Homestead was christened Abbeville in the 1930s. It's transformation has been remarkable. The Homestead seats 80 in its main dining room.

Large doors lead from this room to a welcoming Garden Room, which can be used as a lounge space, with the doors open, the entire dining and Garden Room flow into one. For events that do not require seating, the Homestead can accommodate up to 250.

An original part of the Homestead, the Barn offers an authentic and rustic air to any event. The hewn timber frames speak of over 150 years of history. Below your feet, rustic flooring adds an earthiness to the space. The Barn can comfortably accommodate up to 200 guests for cocktails. It can also be set up to seat up to 40 inside.

The traditional landscaped grounds surrounding the historic buildings includes a kitchen garden whose produce is harvested freshly for our menus. Rolling farmland and trees ring the property for privacy, while the canopy of the Estate's stately Puriri tree provides cooling shade.

There is no limit to the number that can be accommodated in the gardens. Seating can also be organized, whether open air or on the lawn under a marquee.

The light that enters through the stained glass panes of the Church falls over its warm native timber interior and sets the most idyllic stage for intimate ceremonies. Alternatively the landscaped grounds provide a picturesque stage for nuptials and the perfect common area for mingling and photography. A marquee with seating can be arranged on the lawn or you can choose the Homestead or the Barn as the venue for your fully-catered reception.

The Homestead also includes a separate parlour that can be used as a private preparation space for brides.

TO THE HAPPY COUPLE

Your wedding day is one of the most important and significant milestones of your lives. CONGRATULATIONS! We hope you have taken some time to embrace & celebrate the start of this chapter.

Thank you for considering Abbeville Estate to host your special day - we absolutely love weddings and playing a part in what is always such a memorable and happy occasion!

We hope after looking through this wedding kit that you will want to take the next step and organize a viewing with us at the property - we'd love to show you around and discuss the endless opportunities for your day at Abbeville Estate.

CONTACT US

9 Uenuku Way
Auckland Airport
Auckland, New Zealand

Telephone: +64 9 376 1424
E-mail: sales@greatcatering.co.nz
www.abbeville.co.nz

THE JOURNEY

A BREIF LOOK AT WHAT TO EXPECT YOUR WEDDING PLANS TO LOOK LIKE WITH US...

1

ENQUIRE

Get in touch! We'll discuss pricing specific to your needs & check our availability to see if we have your preferred options available.

We can hold your date for 7 days or until someone else is interested, allowing you some time to arrange a viewing and explore your options.

2

VIEW

The best way to really get a feel for the property is to arrange a viewing with us. Walk through the gardens & explore the opportunities with one of our Event Managers to see just how many options there are for your big day!

3

CONFIRM

To secure your date, we will simply require a deposit payment & for you to read, sign and understand the terms and conditions. Easy. We'll then ensure your date is locked in the diary.

4

PLAN

The fun part! Now that you've got the date & venue - the planning can really begin ... Don't be overwhelmed, we'll certainly be here to walk you through the journey - don't worry, your not alone!

We also have a list of fabulous suppliers that we know and trust - you'll love working with!

5

THE DETAILS

We'll work on a runsheet together to ensure we have all of the details in one place & we are all on the same page.

We can organize a wedding rehearsal the day prior, based on availability.

6

GET MARRIED!!

Leave the rest to us and enjoy your day!

OUR SPACES



THE BARN

An original part of the Homestead, the Barn offers an authentic and rustic air to any event. The hewn timber frames speak of over 150 years of history. Below your feet, rustic flooring adds an earthiness to the space.

The Barn can comfortably accommodate up to 200 guests for cocktails. It can also be set up to seat up to 40 inside & makes for a beautiful rustic indoor ceremony option.

Many of our guests choose to use The Barn for the dancing part of the evening which creates a great journey through the property!

THE HOMESTEAD

Built in 1854, the Homestead was christened Abbeville in the 1930s. Its transformation has been remarkable. The Homestead seats 80 in its main dining room for a wedding.

Large doors lead from this room to a welcoming Garden Room which can be used as a cocktail area or lounge.

The Garden Room seats 20 and with the doors open, the entire dining and Garden Room flow into one.

A separate parlour provides a private space for dressing & bridal party shots.

CEREMONY

With several ceremony locations onsite, really are spoilt for choice here at Abbeville Estate! The below options are just a few of our favorite spots we have seen dreams come true on the property - if you'd like your ceremony elsewhere, just let us know!



WESTNEY HOMESTEAD

The most gorgeous building to shape the backdrop for your ceremony or post ceremony drinks & nibbles.

THE CHURCH

After 150 years of faithful service to Mangere and Onehunga, the Church was relocated from its old home a short distance away to Abbeville Estate. Oriented to catch the light through its stained glass windows, the Church has been carefully restored to celebrate its past.

The Church's original timber pews can seat up to 60.



THE GARDENS

Embrace the outdoors & get married beneath our beautiful tree's that surround the property. Our manicured lawns make for the perfect summer setting.



THE BARN

The most gorgeous building to shape the backdrop for your ceremony or post ceremony drinks & nibbles .



THE OUTDOORS

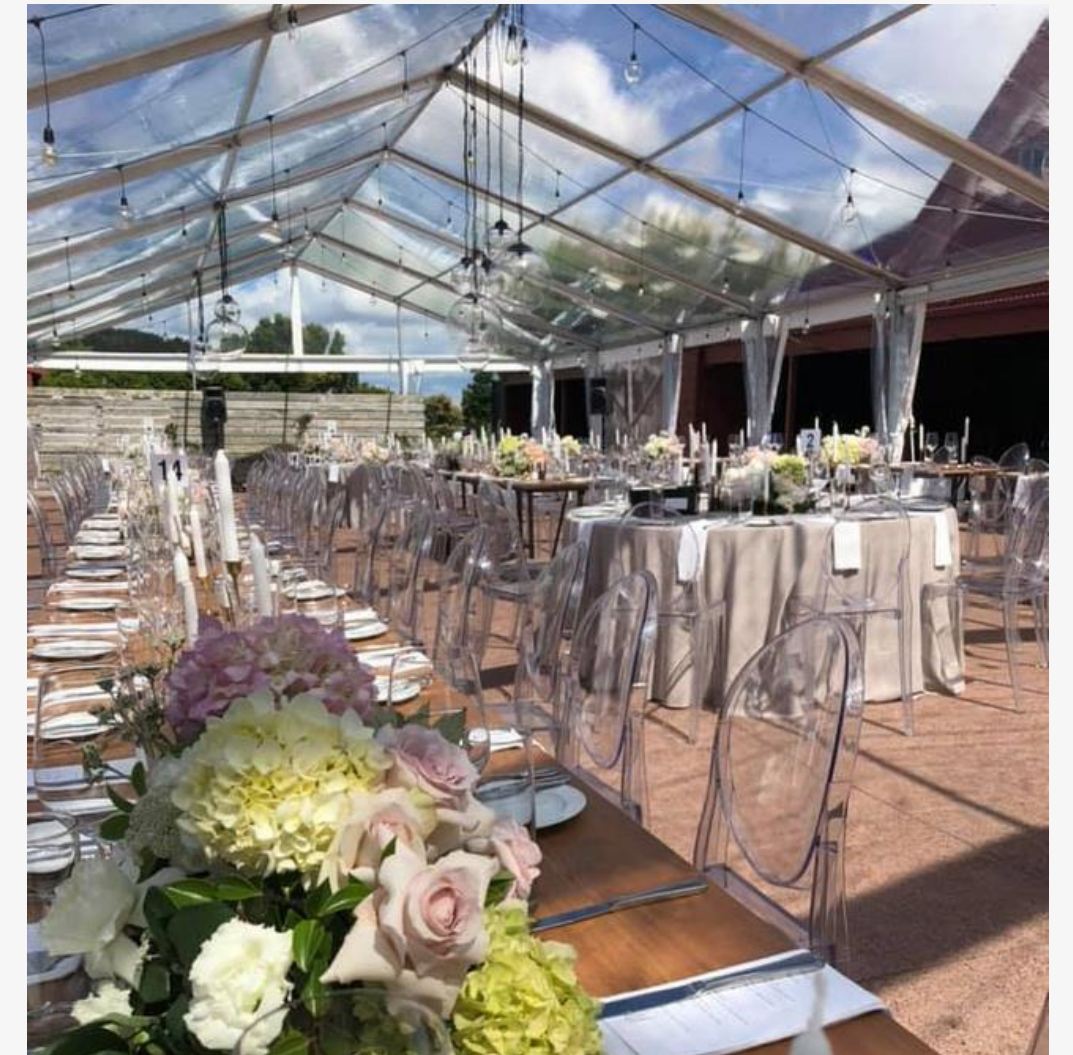
The traditional landscaped grounds surrounding the historic buildings includes a kitchen garden whose produce is harvested freshly for our menus.

Rolling farmland and trees ring the property for privacy, while the canopy of the Estate's stately Puriri tree provides cooling shade.

OUTDOOR RECEPTIONS

Seating can also be organized, whether open air or on the lawn under a marquee.

Please ask us for our preferred marquee suppliers.



FOOD & BEVERAGE

Abbeville Estate is run exclusively by The GREAT Catering Co.

Proudly delivering great catering and seriously delicious food for over twenty years. Time flies when you're having fun! Now we're pushing the boundaries of expectation, flexing a little muscle, and turning our talents towards innovative concepts and creative executions.

From street style bites, boards, bowls, and boxes, to perfectly presented plates and cocktails, we'll inspire you to test your taste buds and savour the unexpected.

Let us cater to your senses - you'll love every bite.



THE GREAT CATERING CO.

“Serious food that’s seriously good”

AN EXAMPLE MENU TO LEAVE YOUR TASTE BUDS TINGLING

Arrival Canapes

- Seared scallop with miso butter, celeriac puree, lime & nduja (GF)
- Beef carpaccio, tarragon, horseradish, agria crisp (GF)
- Lamb loin, mint, hazelnut, pea puree (GF)
- Crispy buttermilk fried Chicken with sriracha mayo
- Wild mushroom croquette, soft herbs, black garlic & chive aioli (V)

Finger Food

- Chicken yakitori skewer, w/ candied chilli
- Hand cut Steak tartare on toasted brioche
- Crispy sticky pork belly bao, slaw, pickles, kewpie
- Triple cheese croquettes, tonkatsu and parmesan (V)

Bowl Food

- Cajun chicken with cabbage slaw, corn puree & smoked paprika (GF)
- Slow cooked lamb shoulder with pearl cous cous, yoghurt & dandelion (GF)
- Cauliflower Mac 'n' Cheese with truffle and mushroom crumble (V)

Dessert

your own wedding cake served

Supper

- Mini wagyu burger, American cheese, pickles, mustard, special sauce
- Shoestring fries, Malden salt, aioli (V)



BEVERAGE OPTIONS

Abbeville Estate is one of very few Auckland venues that offer BYO beverages.

You provide it - we'll service it.
BYO is just \$25 per person



COCKTAILS

We love creating unique and vibrant cocktails for our events! They add such a fun element to the day - speak to us about your most loved cocktail to see if we can create a delicious option for your guests!



WHAT OUR CLIENTS SAY

"Such a wonderful place where the service and food are second to none! Thank you Abbeville & The Great Catering company for the wonderful experience at Holly & Dale's wedding and for the great care towards the guests"

"Stunning setting with super-friendly and professional people to help make your day special. The team made every effort to ensure our day went smoothly and they were so easy to deal with. Highly recommend Abbeville Estate if you are looking for a beautifully presented venue, professional team and delicious food"

"We had our wedding here in November 2019 and had an amazing day. We got married in the church, had canapés in the courtyard, dinner in the homestead and dancing in the barn. So many great places for photos even in terrible weather (we had rain and wind). And the food was delicious!!! We had so many great comments about the dishes we choose. The staff both in the lead up to and on the wedding day were super helpful and accommodating and they pack everything up for you so the morning pack down is easy and quick. Would highly recommend this venue!"

A TYPICAL WEDDING DAY AT ABBEVILLE ESTATE

4.30pm
guests arrive



5.00 – 5.30pm
Ceremony



7.15pm
Group & family photos
& bridal party photoshoot



5.30pm
Drinks & canapes served

7.00pm
Finger Food served



7.30pm
Speeches

9.00pm
Bowl Food served



9.15pm
Cake cutting
Followed by speeches



9.35pm
First dance
Followed by party & dessert!



10.30pm
Supper served



11.30pm Bar closes
12.00am Guests depart

WEDDING PACKAGES & RATES

Here at Abbeville, we like to tailor our proposals to suit you and your day, but we do understand you may just want to get an idea of everything! so we have come up with some simple packages to give you an idea to work from - this is just a starting point and we will tailor your wedding to suit you!

PACKAGE INCLUSIONS

Menu

Canapes - 3 per person
Finger Food - 3 per person
Bowl Food - 1 per person
Supper - 1 per person

Beverage

Charged on consumption
BYO (additional @ \$25pp)

Staffing

Wedding planner & admin*
Duty Manager, waitstaff & barstaff
Setup & pack out staff
Chefs & kitchenhand
Security (Compulsory)
Estimate only - Actual hours charged post event

Equipment

Bar and serving equipment, ice
Glassware, crockery, cutlery, kitchen equipment

Rubbish collection & cleaning

GUIDE PACKAGE RATES - PRICE PER PERSON

Wedding Package - 100 guests \$180.00 + gst
Wedding Package - 80 guests \$190.00 + gst
Wedding Package - 60 guests \$200.00 + gst

*Wedding planner and admin – inclusive of 4 hours and 2 site visits included

VENUE HIRE

Entire Estate
The Homestead
The Barn
The Church

RATES

\$3,500.00
\$2,750.00
\$1,500.00
\$750.00

WINTER RATES

\$2,750.00
\$2,000.00
\$950.00
\$500.00

*** Prices are exclusive of GST
*** Additional to package rates

ADDITIONAL ITEMS

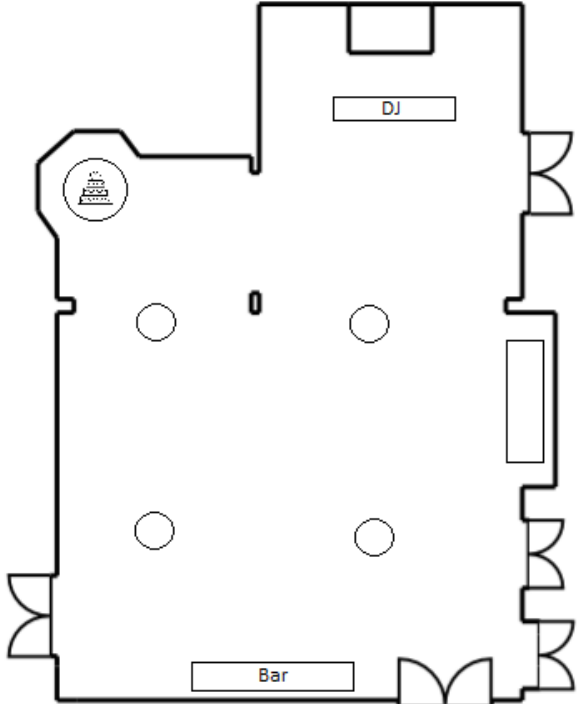
BYO Beverages \$25.00 per person

Additional Canapes \$6.50 per item
Additional Finger Food \$9.00 per item

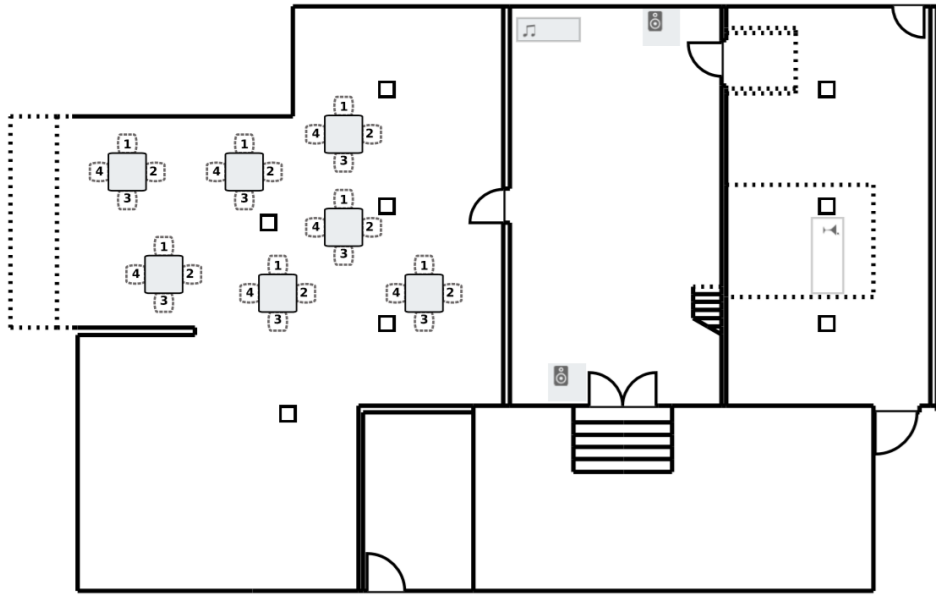
*** Prices are exclusive of GST

Book your winter
wedding
April - October

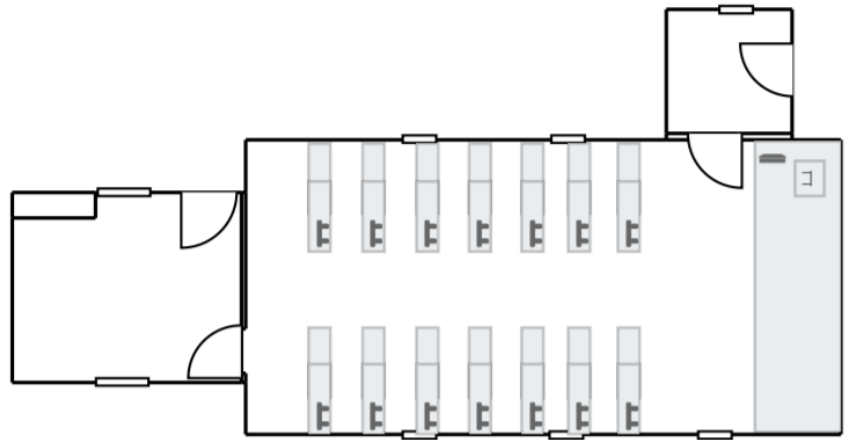
SITE LAYOUT & FLOORPLAN EXAMPLES



HOMESTEAD



THE BARN



CHURCH WITH PEWS - 80 PAX