

RYDGES

LATIMER CHRISTCHURCH

PARTY PACK

REFRESHINGLY LOCAL

[RYDGES.COM](https://rydges.com)



WELCOME

Rydges Latimer Christchurch is the perfect venue for your next School Ball or Formal.

The Hotel's team of dedicated Event Planners will be on hand to assist with every last detail, from catering menus to decorations. The venue features 10 rooms of ample flexible space capable of hosting up to 400 guests. The team are experts in making your special event a memorable occasion.

A balcony along the length of the space offers great indoor/outdoor flow or if you would prefer we can pull the shades to create a night time feel.

We want your event to be perfect, so if you need any recommendations for suppliers we are more than happy to assist.

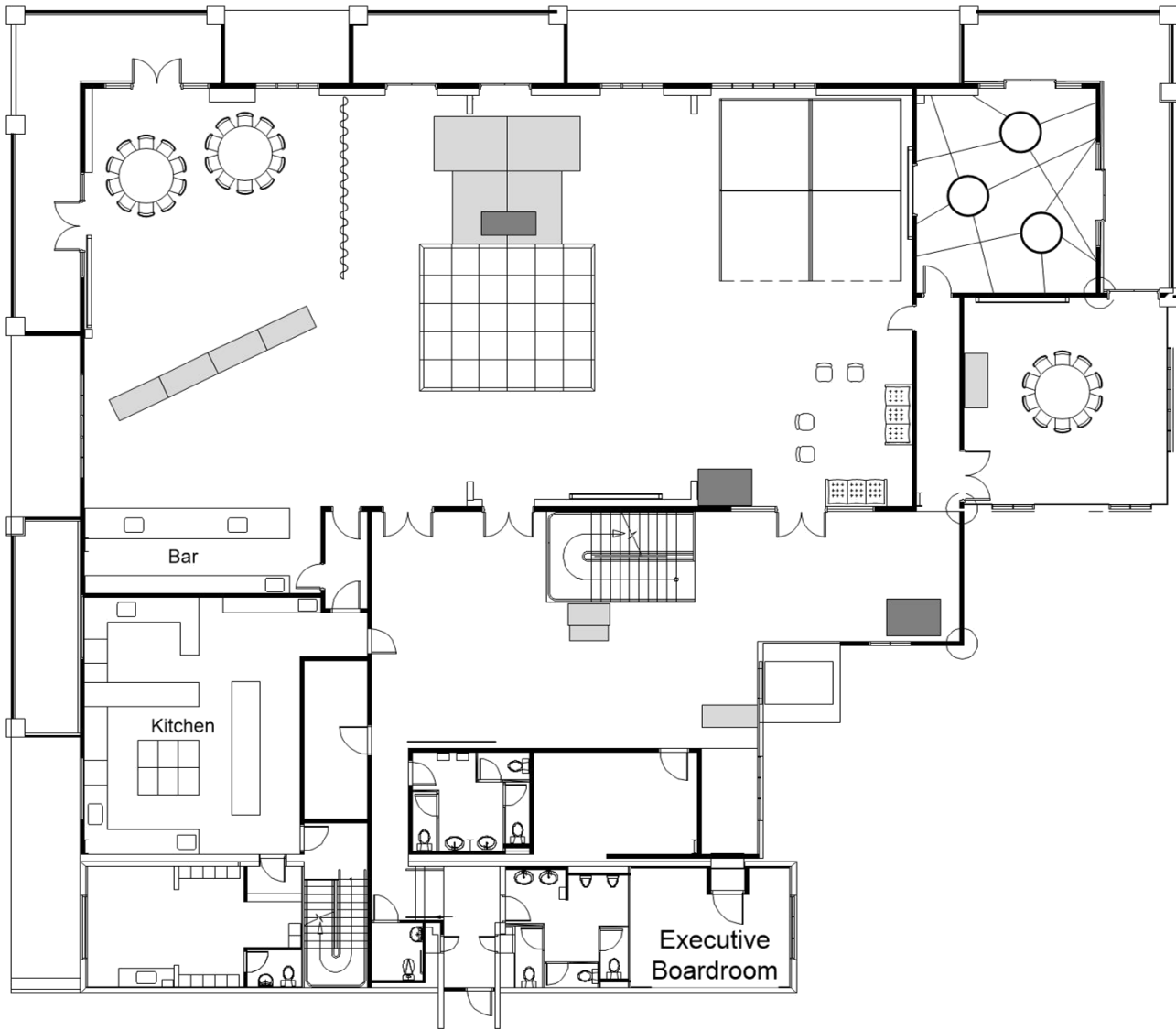
FUNCTION SPACES

Our events floor features 10 rooms of ample adaptable space capable of hosting up to 400 guests.

Room	Area (m2)	Banquet	Cocktail
Savoy Ballroom	378	320	400
Savoy West	182	160	200
Savoy 2	98	88	100
Savoy East	98	88	100
Savoy 3	35	22	20
Savoy 4	63	55	60
Windsor	39	33	40
Clarendon	42	44	40
Executive Boardroom	22	12	-
Foyer	120	-	-

The hotel offers:

- 10 flexible event spaces flooded with natural light (can black out)
- Exclusive events floor with elevator access
- Capacity for up to 400 guests
- Individually controlled air conditioning and lighting
- Integrated audio visual equipment
- Wifi capability for up to 300 devices
- Full event coordination and support
- Complimentary parking



PARTY PACKAGES

SILVER PACKAGE

\$75.00 pp

Minimum of 200 guests

Includes:

Venue Hire

Catering Package Menu 1

Non-Alcoholic Latimer Beverage Package (4 hours)

Access from 8am to Midnight

BUILD-YOUR-OWN PARTY PACKAGE

Venue Hire Fee of \$2,500

Your choice of Catering and Beverage Packages

Minimum food & beverage spend requirement of \$39.00 per person

Access from 8am to Midnight

GOLD PACKAGE

\$85.00 pp

Minimum of 200 guests

Includes:

Venue Hire

Catering Package Menu 2

Non-Alcoholic Latimer Beverage Package (4 hours)

Access from 8am to Midnight



CATERING PACKAGES

MENU 1

\$39.00 pp

Panko crumbed fish & chips w lime & caper tartare sauce
Cheeseburger sliders w tomato & sweet pickles
Bao buns w fried chicken, pickled cucumber & spiced maple dressing
Parmesan & garlic flatbread
Chocolate brownie
Sliced lolly cake

MENU 2

\$49.00 pp

Loaded wedges w sour cream
Handmade sushi selection w pickled ginger & soy sauce
Pan fried pork dumplings w sweet soy sauce
Satay chicken skewers w toasted peanuts
Parmesan & garlic flatbread w traditional hummus
Chocolate brownie
Sliced lolly cake



BEVERAGE PACKAGES

NON-ALCOHOLIC LATIMER BEVERAGE PACKAGE

Includes:

Coca Cola, Diet Coca Cola, Lemonade, Ginger Beer,
Lemon, Lime & Bitters, Tonic Water and Orange Juice

One hour package	\$10.00 pp
Two hour package	\$18.00 pp
Three hour package	\$25.00 pp
Four hour package	\$30.00 pp
Five hour package	\$35.00 pp



NON-ALCOHOLIC DELUXE BEVERAGE PACKAGE

Includes:

Coca Cola, Diet Coca Cola, Lemonade, Ginger Beer,
Lemon, Lime & Bitters, Tonic Water, Simply Squeezed
Juice Range and Mocktails

One hour package	\$15.00 pp
Two hour package	\$22.00 pp
Three hour package	\$30.00 pp
Four hour package	\$35.00 pp
Five hour package	\$40.00 pp



TERMS & CONDITIONS

BOND

A \$1,200 Venue bond is required for your booking. This bond will be refunded at the conclusion of your event if no damage to the venue or equipment occurs, and no additional extra cleaning is required outside of the general custodial cleaning that is provided with the venue.

PARENT/TEACHER SUPERVISION

A set level of parent and/or teacher supervision, determined by Rydges Latimer Christchurch on a case-by-case basis, is required at every School Ball. Parents and teachers are required to support Rydges Latimer Christchurch's discretion in regard to managing student behaviour.

DEPOSIT & PAYMENT

In addition to the bond payment a ten (10) percent deposit is required to secure the booking. 100% of all other known charges is to be paid no later than seven (7) days prior to the event.

FINAL NUMBERS

Final confirmed numbers for your event must be provided to your Event Coordinator no later than five (5) working days prior to the function date. With approval from your Event Coordinator, minor increases to confirmed numbers (up to 5%) may be accommodated up to two (2) business days in advance of the function. Increased numbers will be charged to the final account.

SECURITY

A minimum of three Security personnel is required for the duration of your event, charged at \$65 per hour per guard at your own cost. Additional guards and/or breath testing may be charged at the hotel's discretion.



RYDGES

LATIMER CHRISTCHURCH

RYDGES LATIMER CHRISTCHURCH

30 Latimer Square, Christchurch Central City,
Christchurch 8011

ENQUIRIES

+64 3 379 6760

functions_rydgeslatimerchristchurch@evt.com

REFRESHINGLY LOCAL

RYDGES.COM