

Venue Options

Venue Details

Skyline offers a range of venue options (all with floor to ceiling windows) suitable for any style of function.

Wakatipu Room

The Wakatipu Room is suitable for gala and award dinners, luncheons, themed events, day conferences, team building and weddings - just to name a few - and can be divided into two separate spaces (Coronet Peak and Walter Peak) suitable for smaller groups or breakout areas.

Director's Room

The Director's Room is a warm and elegantly appointed private function room perfect for intimate dining or for an Annual Board of Directors meeting.

Stratosfare Restaurant

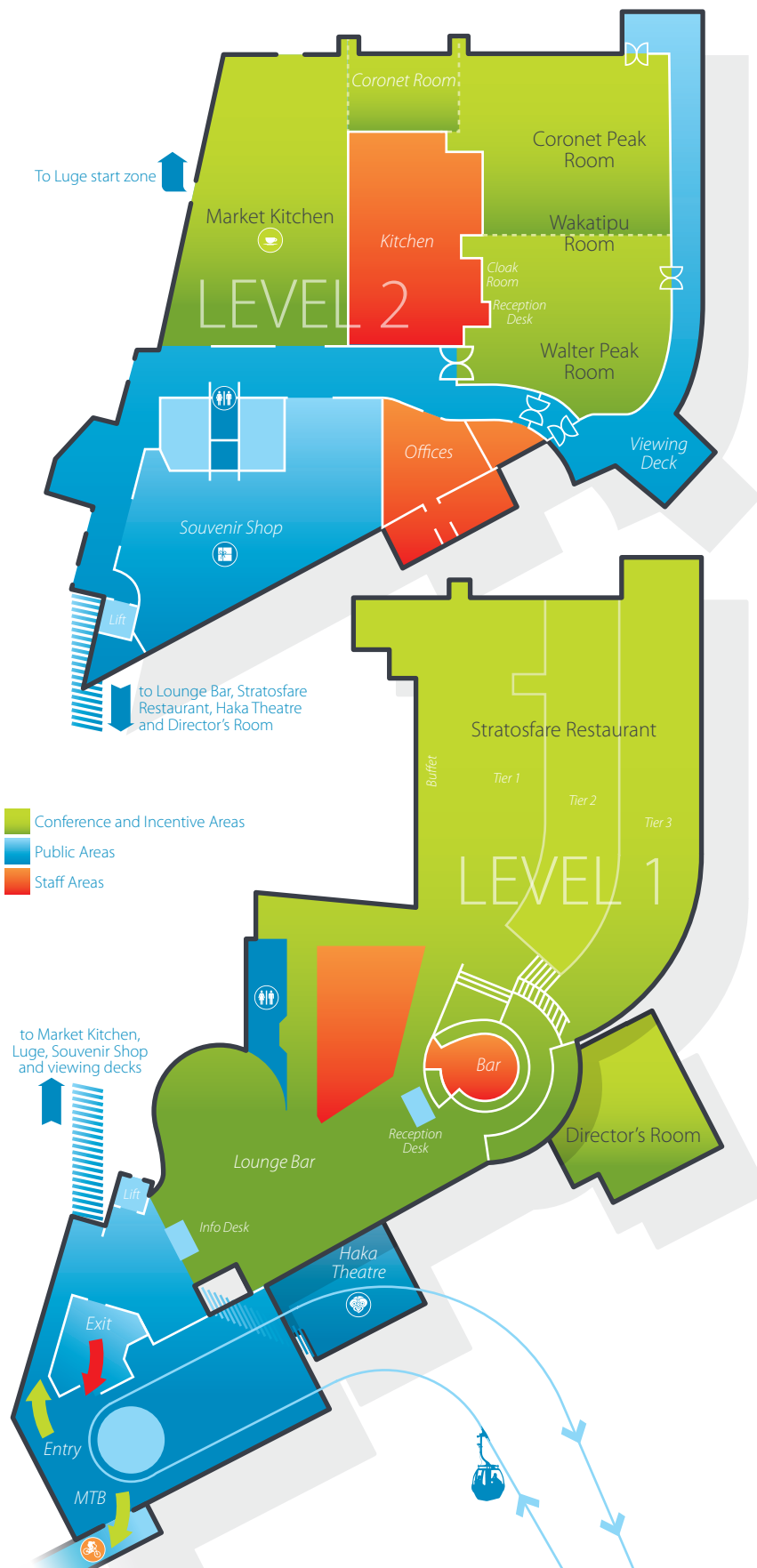
Private use of the Stratosfare Restaurant is possible along with the adjoining bar area - subject to availability.

The Skyline Complex

The Skyline Complex is available for exclusive use for large events (maximum 900 people), subject to availability. Please contact our Conference and Incentive Sales Manager for more details.

Actual venue capacity may vary depending on staging requirements and set-up style.

Group will be placed in a venue appropriate to their size (per the minimum and maximum capacities specified above and actual venue set-up requirements). An additional charge will apply for groups requiring a larger venue, where their number does not meet the minimum requirements for that venue.



Venues	Setup Style			Venue Size						
	Cocktail	Exclusive Dining	Day Conferencing	Area	Pillars	W x L x H				
		Set Menu	Buffet	Theatre	Cabaret	Class Room				
LEVEL 2	Wakatipu	400	40-220	40-220	400	160	130	312m ²	Y	12 x 26 x 3
	Walter Peak	150	40-60	40-50	130	40	55	156m ²	Y	12 x 13 x 3
	Coronet Peak	200	40-100	40-100	160	64	60	156m ²	Y	12 x 13 x 3
	Market Kitchen	80	-	80	-	-	-	210m ²	N	21 x 10 x 3
LEVEL 1	Director's Room	30	10-24	-	25	18	-	60m ²	Y	5.5 x 10 x 3
	Stratosfare Restaurant	500-650	220-430	220-360	-	-	-	750m ²	Y	19 x 26 x 3